



## Fieldfare

📍 off Halstead Road, Mountsorrel, Leicestershire, LE12 7HE

A range of new houses for sale in Mountsorrel, comprising of 2, 3, 4 & 5 bedroom homes. Fieldfare is situated on the edge of Mountsorrel, within easy reach of all the excellent amenities the village has to offer.

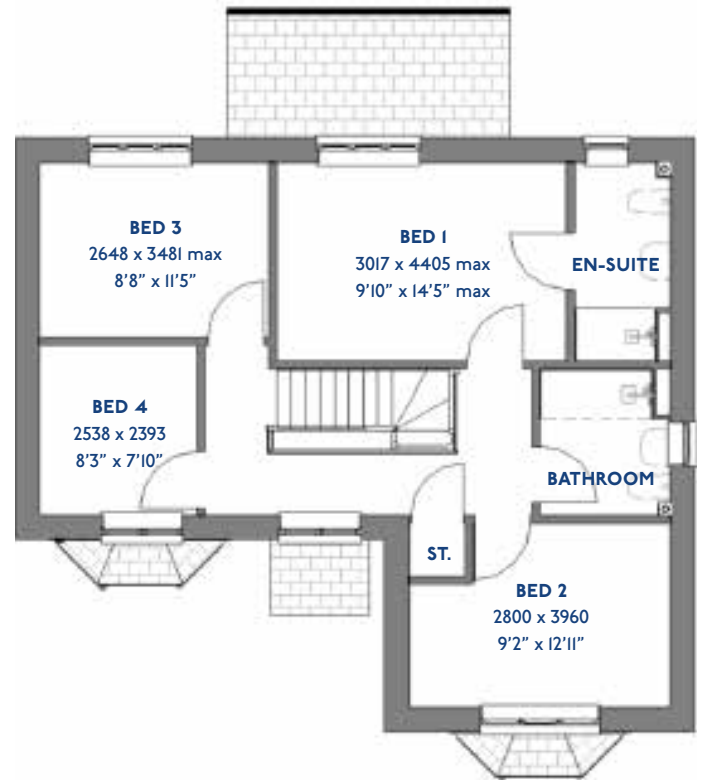
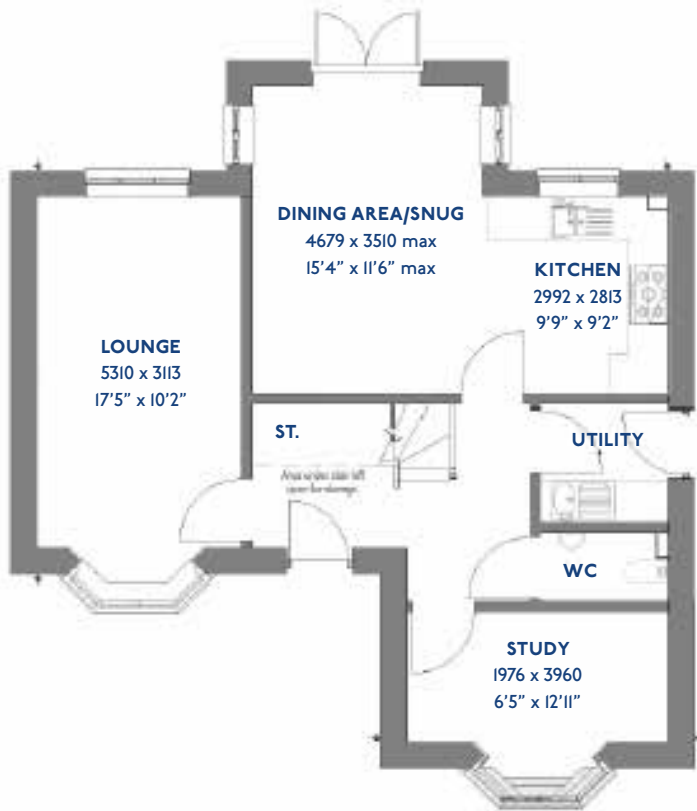
There are local stores, supermarkets (including Waitrose), doctor and dental surgeries and a good choice of local eateries. Along with a number of sporting and leisure facilities including a large swimming pool and a gym.

The village is situated off the A6 between Leicester and Loughborough, meaning these new homes in Leicestershire are well connected. Sileby train station is also approximately two miles away, being a direct route to Leicester and London.

JD408L

# The Aspen

4 bed detached house



\*Please note this property can be built in brick or render.

# Specification

## The Aspen: 4 bed detached house

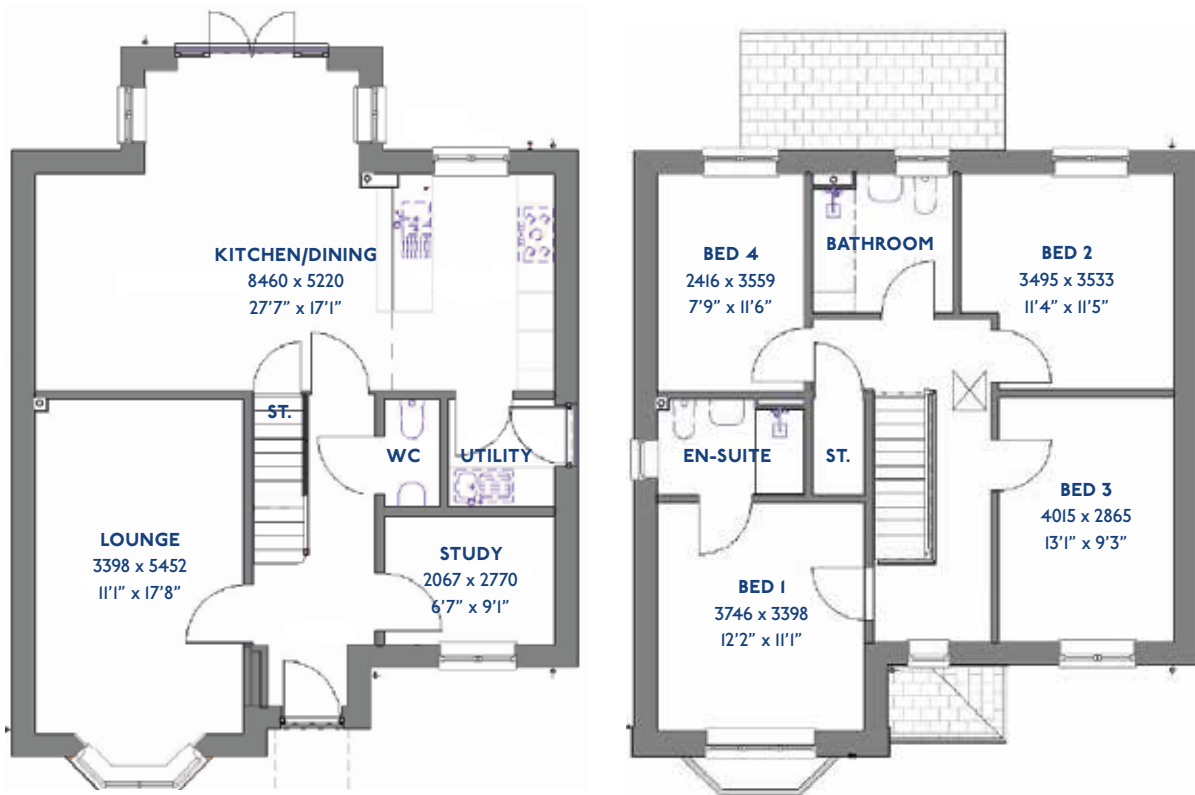
- ♦ Quality and value from a very old established family business with an enviable reputation.
- ♦ Traditional brick construction with a good standard of insulation.
- ♦ Solid internal walls to ground and 1st floor.
- ♦ PVCu windows, soits and fascias.
- ♦ To include Oak Internal Doors.
- ♦ White Emulsion paint throughout.
- ♦ Fitted Kitchen with Single Oven in tall housing with Combination Microwave Oven, Induction Hob, Flat Bottom Canopy Chimney and Stainless Steel Splashback. Under Pelmet lighting to wall units, small larder unit with wirework pull in baskets. A one & half bowl Under Mounted Stainless Steel sink, plumbing and electrics for washing machine, Integrated Fridge Freezer and Dishwasher. White downlighters to Kitchen & pendant fitting to Dining Area of Kitchen (if applicable).
- ♦ Quartz worktop to Kitchen only with quartz upstands.
- ♦ Baxi Assure Air Source Heat Pump for hot water and heating with Solar Panels.
- ♦ VEVA Domestic EV Charger (Untethered)
- ♦ Ceramic flooring to Kitchen & Utility (if applicable).
- ♦ White sanitary ware with co-ordinating wall tiles & white downlighters to Bathroom only. Thermostatic shower over bath in Main Bathroom together with a Silver shower screen. Shaver Socket & Chrome Heated Towel Rail to the Bathroom.
- ♦ Cat 5 socket to Lounge next to TV aerial point and Bed 1 & Study (if applicable). TV aerial point in Lounge, Bed 1 & Kitchen/Diner.
- ♦ Intruder Alarm system
- ♦ Smoke detectors, Carbon Monoxide Alarm and security locks to all external doors. Door Bell. External light to front and rear of property.
- ♦ Outside tap to rear of property.
- ♦ Fenced rear garden. Turfing to front and rear gardens (where applicable).
- ♦ N.H.B.C 10 year warranty.
- ♦ Carpets from the Jelson selected range.

Please note: This information is only for guidance. Jelson Limited reserve the right to make alterations as necessary in respect of design, dimensions and finish of properties. All dimensions are approximate and for identification purposes only. You are advised to check with our Sales Staff regarding choices and fittings in particular house types. Where an option is indicated, this is subject to the building stage and whether materials have already been ordered. The company's policy is one of continuous improvement both in design and construction and we must therefore, reserve the right to make amendments without notice. The details contained in this leaflet do not form part of, or constitute warranty or part of any contract.

JD411

# The Cardinal

4 bed detached house



\*Please note this property can be built in brick or render.

# Specification

## The Cardinal: 4 bed detached house

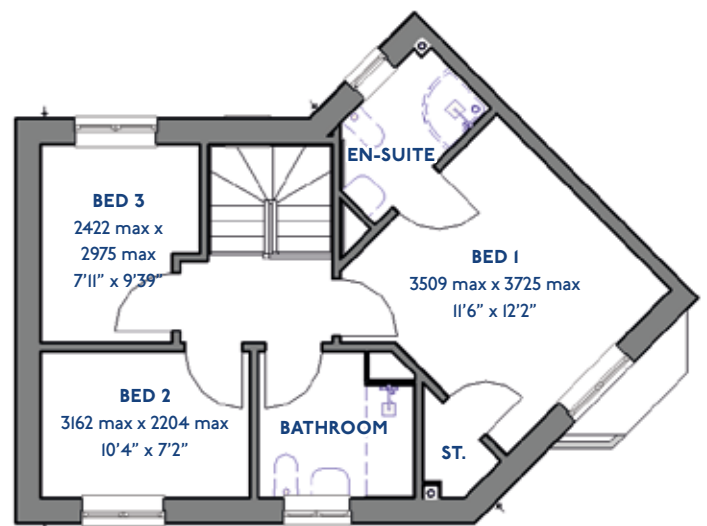
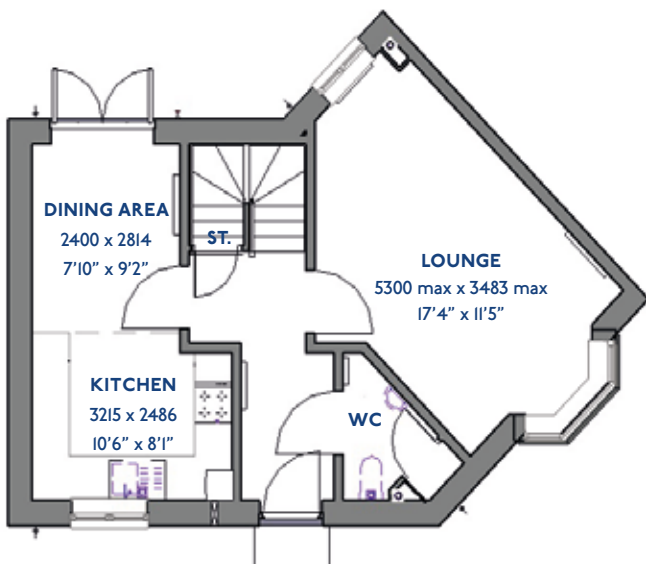
- ♦ Quality and value from a very old established family business with an enviable reputation.
- ♦ Traditional brick construction with a good standard of insulation.
- ♦ Solid internal walls to ground and 1st floor.
- ♦ PVCu windows, soffits and fascias.
- ♦ To include Oak Internal Doors.
- ♦ White Emulsion paint throughout.
- ♦ Fitted Kitchen with Single Oven in tall housing with Combination Microwave Oven, Induction Hob, Flat Bottom Canopy Chimney and Stainless Steel Splashback. Under Pelmet lighting to wall units, small larder unit with wirework pull in baskets. A one & half bowl Under Mounted Stainless Steel sink, plumbing and electrics for washing machine, Integrated Fridge Freezer and Dishwasher. White downlighters to Kitchen & pendant fitting to Dining Area of Kitchen (if applicable).
- ♦ Quartz worktop to Kitchen only with quartz upstands.
- ♦ Baxi Assure Air Source Heat Pump for hot water and heating (with Solar Panels)
- ♦ VEVA Domestic EV Charger (Untethered)
- ♦ Ceramic flooring to Kitchen & Utility (if applicable).
- ♦ White sanitary ware with co-ordinating wall tiles & white downlighters to Bathroom only. Thermostatic shower over bath in Main Bathroom together with a Silver shower screen. Shaver Socket & Chrome Heated Towel Rail to the Bathroom.
- ♦ Cat 5 socket to Lounge next to TV aerial point and Bed 1 & Study (if applicable). TV aerial point in Lounge, Bed 1 & Kitchen/Diner.
- ♦ Intruder Alarm system.
- ♦ Smoke detectors, Carbon Monoxide Alarm and security locks to all external doors. Door Bell. External light to front and rear of property.
- ♦ Outside tap to rear of property.
- ♦ Fenced rear garden. Turfing to front and rear gardens (where applicable).
- ♦ N.H.B.C 10 year warranty.
- ♦ Carpets from the Jelson selected range.

Please note: This information is only for guidance. Jelson Limited reserve the right to make alterations as necessary in respect of design, dimensions and finish of properties. All dimensions are approximate and for identification purposes only. You are advised to check with our Sales Staff regarding choices and fittings in particular house types. Where an option is indicated, this is subject to the building stage and whether materials have already been ordered. The company's policy is one of continuous improvement both in design and construction and we must therefore, reserve the right to make amendments without notice. The details contained in this leaflet do not form part of, or constitute warranty or part of any contract.

JS322

# The Exton

3 bed semi-detached house



\*Please note this property can be built in brick or render.

# Specification

## The Exton: 3 bed semi-detached house

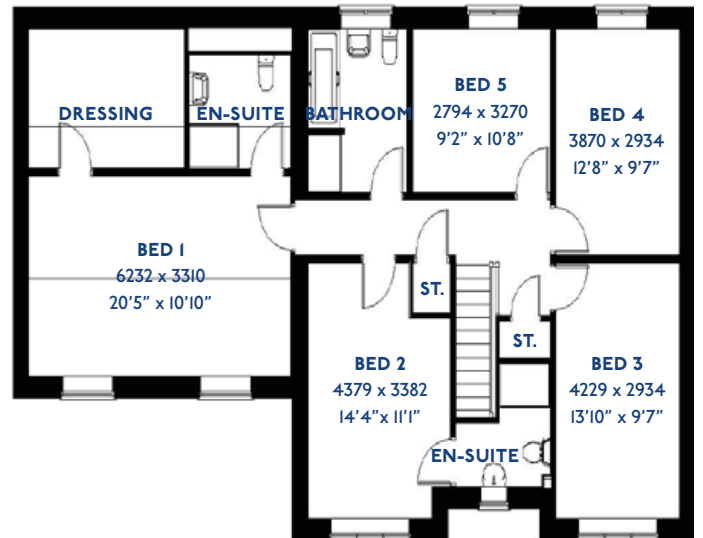
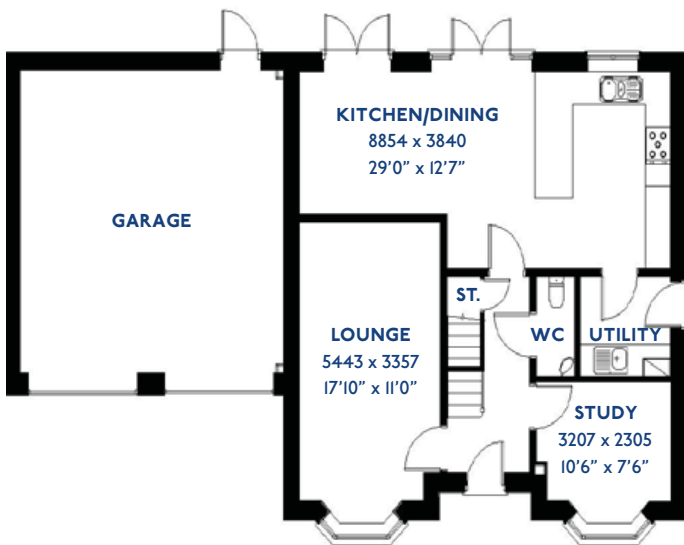
- ♦ Quality and value from a very old established family business with an enviable reputation.
- ♦ Traditional brick construction with a good standard of insulation.
- ♦ Solid internal walls to ground and 1st floor.
- ♦ PVCu windows, soffits and fascias.
- ♦ White Emulsion paint throughout.
- ♦ Fitted Kitchen with Single Oven in tall housing, 4 Burner Induction Hob and Flat Bottom Canopy Chimney. A single bowl Stainless Steel sink, plumbing and electrics for washing machine, Integrated Fridge Freezer and Dishwasher. White downlighters to Kitchen & pendant fitting to Dining Area of Kitchen (if applicable).
- ♦ Ceramic flooring to Kitchen.
- ♦ Baxi Assure Air Source Heat Pump for hot water and heating with Solar Panels.
- ♦ VEVA Domestic EV Charger (Untethered)
- ♦ White sanitary ware with co-ordinating wall tiles & white downlighters to Bathroom only. Thermostatic shower over bath in Main Bathroom together with a Silver shower screen. Thermostatic shower to En-Suite with co-ordinating wall tiles. Shaver Socket & Chrome Heated Towel Rail to the Bathroom & En-Suite.
- ♦ Cat 5 socket to Lounge next to TV aerial point and Bed 1 & Study (if applicable). TV aerial point in Lounge, Bed 1 & Kitchen/Diner.
- ♦ Wiring only for future Intruder Alarm for keypad, control panel and bell box.
- ♦ Smoke detectors, Carbon Monoxide Alarm and security locks to all external doors. External light to front and rear elevation. Outside tap to rear of property.
- ♦ Fenced rear garden. Turfing to front and rear gardens (where applicable).
- ♦ N.H.B.C 10 year warranty.
- ♦ Carpets from the Jelson selected range.

Please note: This information is only for guidance. Jelson Limited reserve the right to make alterations as necessary in respect of design, dimensions and finish of properties. All dimensions are approximate and for identification purposes only. You are advised to check with our Sales Staff regarding choices and fittings in particular house types. Where an option is indicated, this is subject to the building stage and whether materials have already been ordered. The company's policy is one of continuous improvement both in design and construction and we must therefore, reserve the right to make amendments without notice. The details contained in this leaflet do not form part of, or constitute warranty or part of any contract.

JD504

# The Falcon

5 bed detached house



\*Please note this property can be built in brick or render.

# Specification

## The Falcon: 5 bed detached house

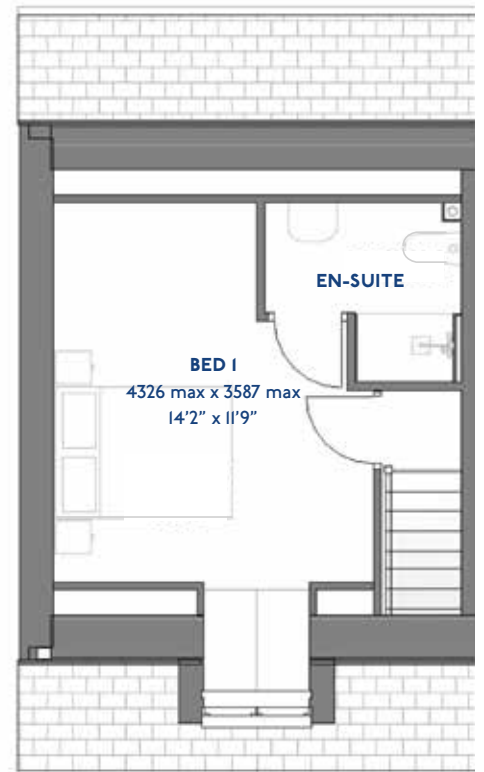
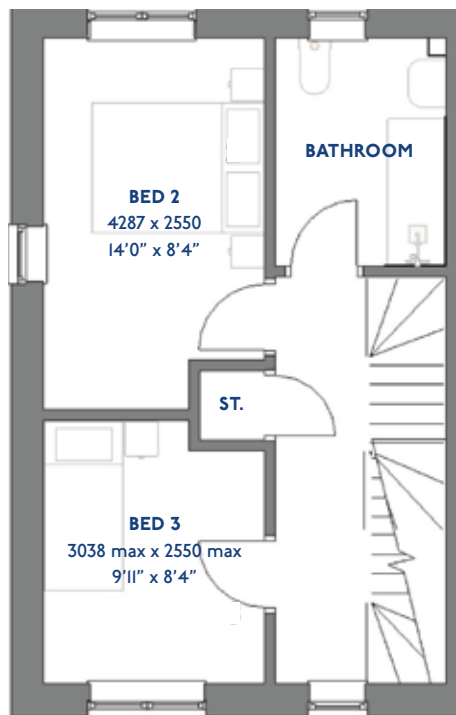
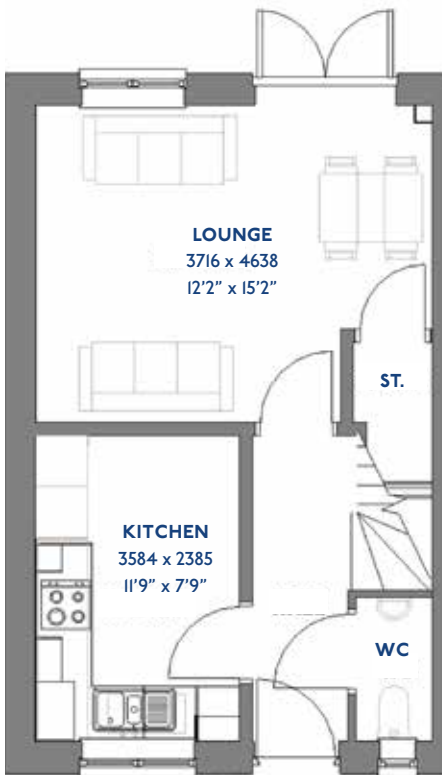
- ♦ Quality and value from a very old established family business with an enviable reputation.
- ♦ Traditional brick construction with a good standard of insulation.
- ♦ Solid internal walls to ground and 1st floor.
- ♦ PVCu windows, soffits and fascias.
- ♦ To include Oak Internal Doors.
- ♦ White Emulsion paint throughout.
- ♦ Fitted Kitchen with Single Oven in tall housing with Combination Microwave Oven, Induction Hob, Flat Bottom Canopy Chimney and Stainless Steel Splashback. Under Pelmet lighting to wall units, small larder unit with wirework pull in baskets. A one & half bowl Under Mounted Stainless Steel sink, plumbing and electrics for washing machine, Integrated Fridge Freezer and Dishwasher. White downlighters to Kitchen & pendant fitting to Dining Area of Kitchen (if applicable).
- ♦ Quartz worktop to Kitchen only with quartz upstands.
- ♦ Baxi Assure Air Source Heat Pump for hot water and heating with Solar Panels.
- ♦ Ceramic flooring to Kitchen & Utility (if applicable).
- ♦ VEVA Domestic EV Charger (Untethered)
- ♦ White sanitary ware with co-ordinating wall tiles & white downlighters to Bathroom only. Thermostatic shower over bath in Main Bathroom together with a Silver shower screen. Shaver Socket & Chrome Heated Towel Rail to the Bathroom.
- ♦ Cat 5 socket to Lounge next to TV aerial point and Bed 1 & Study (if applicable). TV aerial point in Lounge, Bed 1 & Kitchen/Diner.
- ♦ Intruder Alarm system
- ♦ Smoke detectors, Carbon Monoxide Alarm and security locks to all external doors. Door Bell. External light to front and rear of property.
- ♦ Outside tap to rear of property.
- ♦ Fenced rear garden. Turfing to front and rear gardens (where applicable).
- ♦ N.H.B.C 10 year warranty.
- ♦ Carpets from the Jelson selected range.

Please note: This information is only for guidance. Jelson Limited reserve the right to make alterations as necessary in respect of design, dimensions and finish of properties. All dimensions are approximate and for identification purposes only. You are advised to check with our Sales Staff regarding choices and fittings in particular house types. Where an option is indicated, this is subject to the building stage and whether materials have already been ordered. The company's policy is one of continuous improvement both in design and construction and we must therefore, reserve the right to make amendments without notice. The details contained in this leaflet do not form part of, or constitute warranty or part of any contract.

JS318

# The Heron

3 bed semi-detached house



\*Please note this property can be built in brick or render.

# Specification

## The Heron: 3 bed semi-detached house

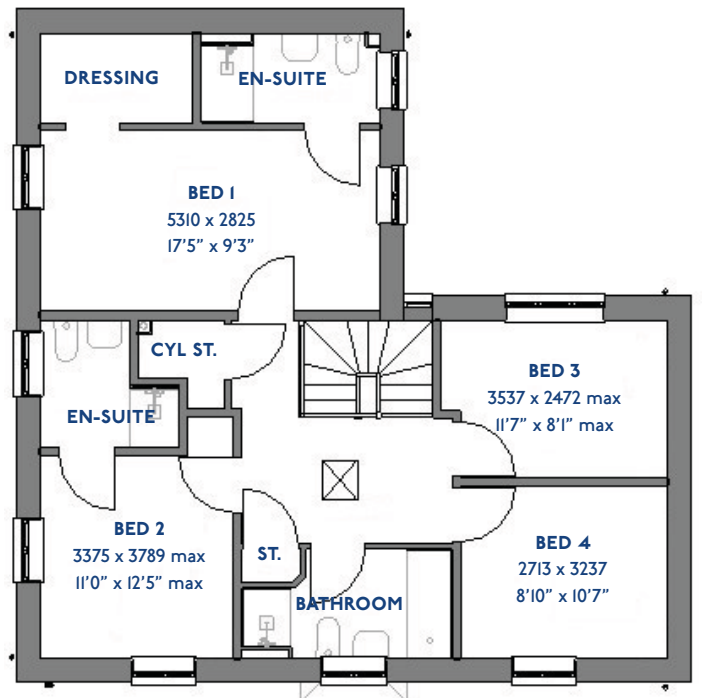
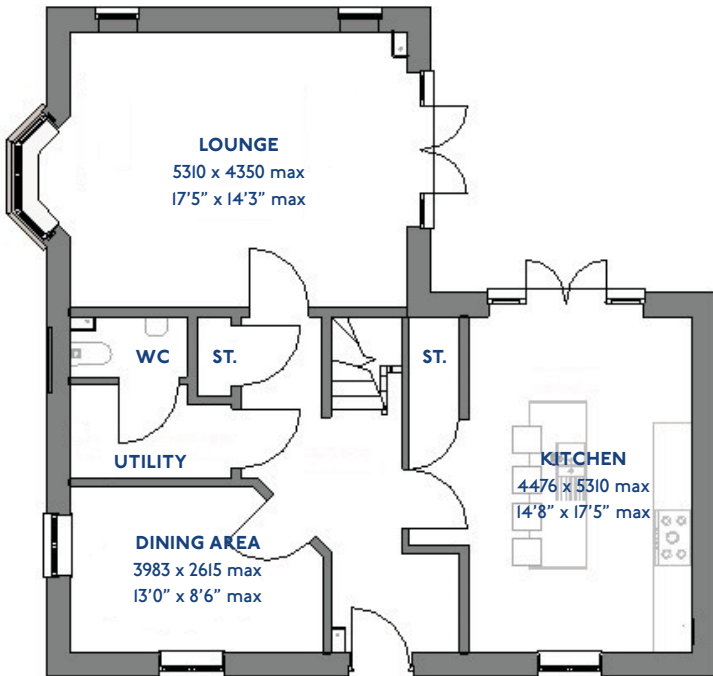
- ♦ Quality and value from a very old established family business with an enviable reputation.
- ♦ Traditional brick construction with a good standard of insulation.
- ♦ Solid internal walls to ground and 1st floor.
- ♦ PVCu windows, soffits and fascias.
- ♦ White Emulsion paint throughout.
- ♦ Fitted Kitchen with Single Oven in tall housing, 4 Burner Induction Hob and Flat Bottom Canopy Chimney. A single bowl Stainless Steel sink, plumbing and electrics for washing machine, Integrated Fridge Freezer and Dishwasher. White downlighters to Kitchen & pendant fitting to Dining Area of Kitchen (if applicable).
- ♦ Ceramic flooring to Kitchen.
- ♦ Baxi Assure Air Source Heat Pump for hot water and heating with Solar Panels.
- ♦ VEVA Domestic EV Charger (Untethered)
- ♦ White sanitary ware with co-ordinating wall tiles & white downlighters to Bathroom only. Thermostatic shower over bath in Main Bathroom together with a Silver shower screen. Thermostatic shower to En-Suite with co-ordinating wall tiles. Shaver Socket & Chrome Heated Towel Rail to the Bathroom & En-Suite.
- ♦ Cat 5 socket to Lounge next to TV aerial point and Bed 1 & Study (if applicable). TV aerial point in Lounge, Bed 1 & Kitchen/Diner.
- ♦ Wiring only for future Intruder Alarm for keypad, control panel and bell box.
- ♦ Smoke detectors, Carbon Monoxide Alarm and security locks to all external doors. External light to front and rear elevation.
- ♦ Outside tap to rear of property.
- ♦ Fenced rear garden. Turfing to front and rear gardens (where applicable).
- ♦ N.H.B.C 10 year warranty.
- ♦ Carpets from the Jelson selected range.

Please note: This information is only for guidance. Jelson Limited reserve the right to make alterations as necessary in respect of design, dimensions and finish of properties. All dimensions are approximate and for identification purposes only. You are advised to check with our Sales Staff regarding choices and fittings in particular house types. Where an option is indicated, this is subject to the building stage and whether materials have already been ordered. The company's policy is one of continuous improvement both in design and construction and we must therefore, reserve the right to make amendments without notice. The details contained in this leaflet do not form part of, or constitute warranty or part of any contract.

JD421 / JD421L

# The Kingfisher

4 bed detached house



\*Please note this property can be built in brick or render.

# Specification

## The Kingfisher: 4 bed detached house

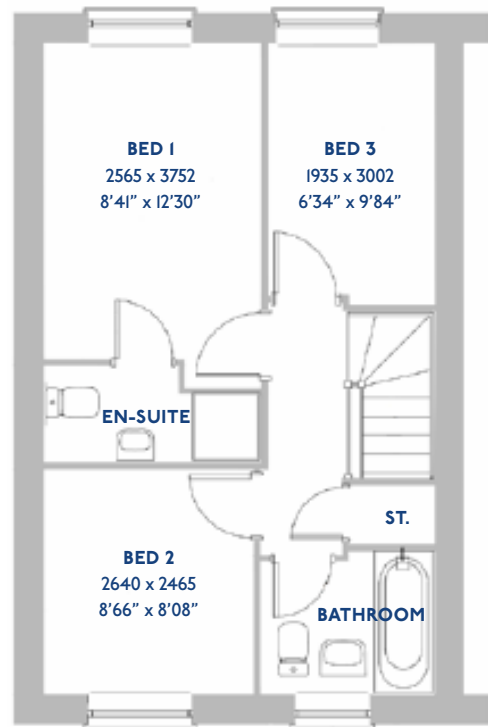
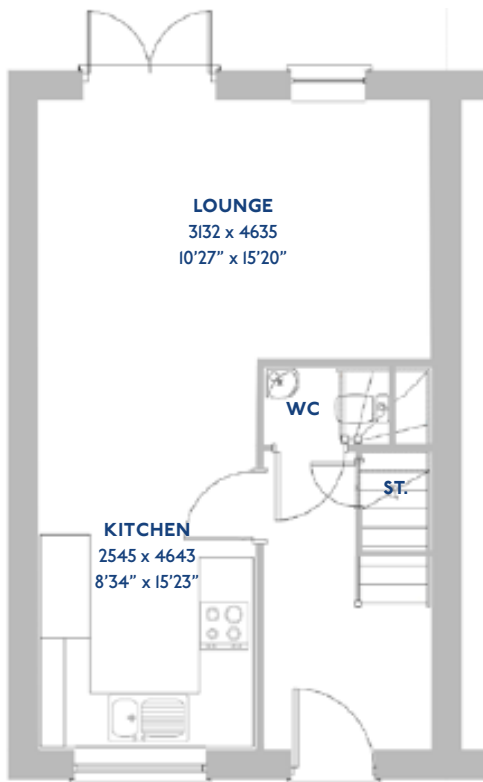
- ♦ Quality and value from a very old established family business with an enviable reputation.
- ♦ Traditional brick construction with a good standard of insulation.
- ♦ Solid internal walls to ground and 1st floor.
- ♦ PVCu windows, soffits and fascias.
- ♦ To include Oak Internal Doors.
- ♦ White Emulsion paint throughout.
- ♦ Fitted Kitchen with Single Oven in tall housing with Combination Microwave Oven, Induction Hob, Flat Bottom Canopy Chimney and Stainless Steel Splashback. Under Pelmet lighting to wall units, small larder unit with wirework pull in baskets. A one & half bowl Under Mounted Stainless Steel sink, plumbing and electrics for washing machine, Integrated Fridge Freezer and Dishwasher. White downlighters to Kitchen & pendant fitting to Dining Area of Kitchen (if applicable).
- ♦ Quartz worktop to Kitchen only with quartz upstands.
- ♦ Baxi Assure Air Source Heat Pump for hot water and heating with Solar Panels.
- ♦ VEVA Domestic EV Charger (Untethered).
- ♦ Ceramic flooring to Kitchen & Utility (if applicable).
- ♦ White sanitary ware with co-ordinating wall tiles & white downlighters to Bathroom only. Thermostatic shower over bath in Main Bathroom together with a Silver shower screen. Shaver Socket & Chrome Heated Towel Rail to the Bathroom.
- ♦ Cat 5 socket to Lounge next to TV aerial point and Bed 1 & Study (if applicable). TV aerial point in Lounge, Bed 1 & Kitchen/Diner.
- ♦ Intruder Alarm system.
- ♦ Smoke detectors, Carbon Monoxide Alarm and security locks to all external doors. Door Bell. External light to front and rear of property.
- ♦ Outside tap to rear of property.
- ♦ Fenced rear garden. Turfing to front and rear gardens (where applicable).
- ♦ N.H.B.C 10 year warranty.
- ♦ Carpets from the Jelson selected range.

Please note: This information is only for guidance. Jelson Limited reserve the right to make alterations as necessary in respect of design, dimensions and finish of properties. All dimensions are approximate and for identification purposes only. You are advised to check with our Sales Staff regarding choices and fittings in particular house types. Where an option is indicated, this is subject to the building stage and whether materials have already been ordered. The company's policy is one of continuous improvement both in design and construction and we must therefore, reserve the right to make amendments without notice. The details contained in this leaflet do not form part of, or constitute warranty or part of any contract.

JS304

# The Plover

3 bed semi-detached houses



\*Please note this property can be built in brick or render.

# Specification

## The Plover: 3 bed semi-detached houses

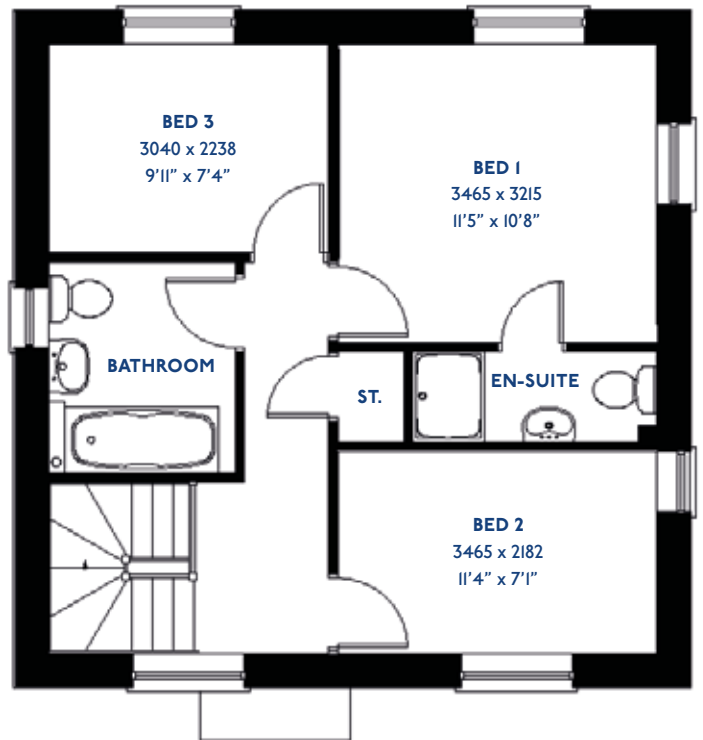
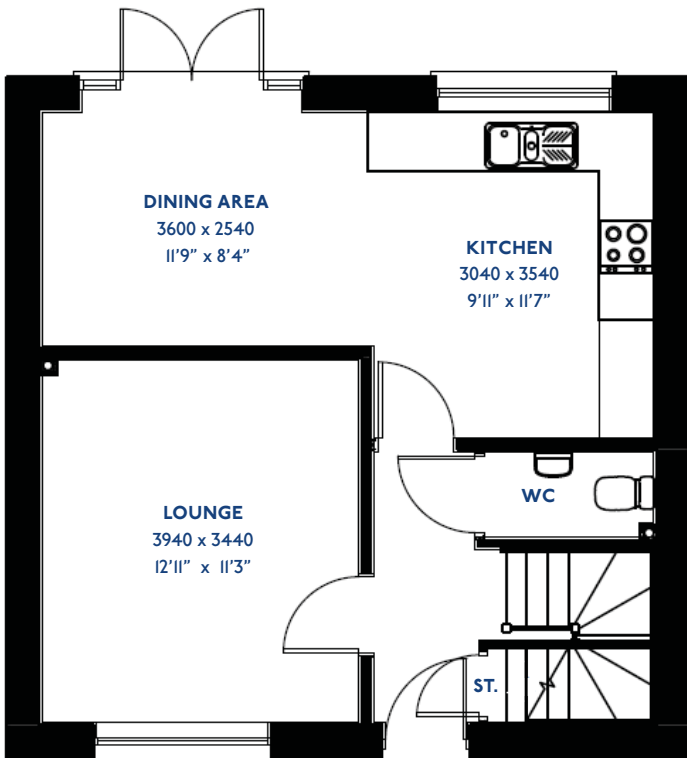
- Quality and value from a very old established family business with an enviable reputation.
- Traditional brick construction with a good standard of insulation.
- Solid internal walls to ground and 1st floor.
- PVCu windows, soffits and fascias.
- White Emulsion paint throughout.
- Fitted Kitchen with Single Oven in tall housing, 4 Burner Gas Hob and Flat Bottom Canopy Chimney. A single bowl Stainless Steel sink, plumbing and electrics for washing machine, Integrated Fridge Freezer and Dishwasher. White downlighters to Kitchen & pendant fitting to Dining Area of Kitchen (if applicable).
- Ceramic flooring to Kitchen & Utility (if applicable).
- Full gas central heating with thermostat & Solar Panels.
- VEVA Domestic EV Charger (Untethered)
- White sanitary ware with co-ordinating wall tiles & white downlighters to Bathrooms. Thermostatic shower over bath in Main Bathroom together with a Silver shower screen. Thermostatic shower to En-Suite with co-ordinating wall tiles. Shaver Socket & Chrome Heated Towel Rail to the Bathroom & En-Suite.
- Cat 5 socket to Lounge next to TV aerial point and Bed 1 & Study (if applicable). TV aerial point in Lounge, Bed 1 & Kitchen/Diner. Two mains sockets in Kitchen & Bedroom 1.
- Wiring only for future Intruder Alarm for keypad, control panel and bell box.
- Smoke detectors, Carbon Monoxide Alarm and security locks to all external doors. External light to front and rear of property.
- Outside tap to rear of property.
- Fenced rear garden. Turfing to front and rear gardens (where applicable).
- N.H.B.C 10 year warranty.
- Carpets from the Jelson selected range.

Please note: This information is only for guidance. Jelson Limited reserve the right to make alterations as necessary in respect of design, dimensions and finish of properties. All dimensions are approximate and for identification purposes only. You are advised to check with our Sales Staff regarding choices and fittings in particular house types. Where an option is indicated, this is subject to the building stage and whether materials have already been ordered. The company's policy is one of continuous improvement both in design and construction and we must therefore, reserve the right to make amendments without notice. The details contained in this leaflet do not form part of, or constitute warranty or part of any contract.

D3/31 / JD313L

# The Redpoll

3 bed detached house



\*Please note this property can be built in brick or render.

# Specification

## The Redpoll: 3 bed detached house

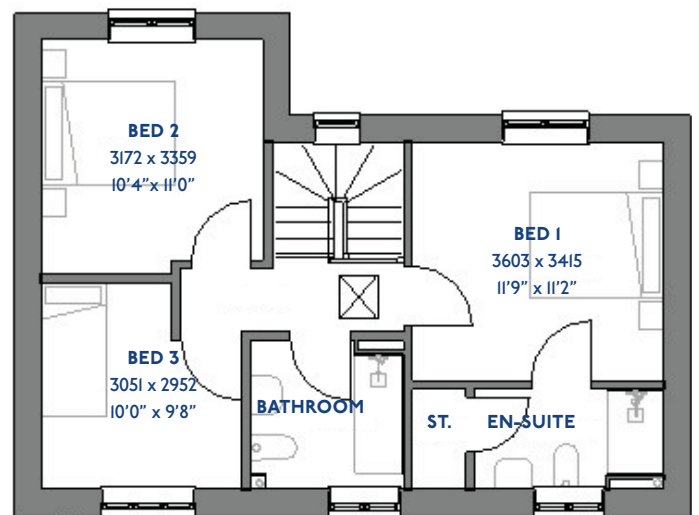
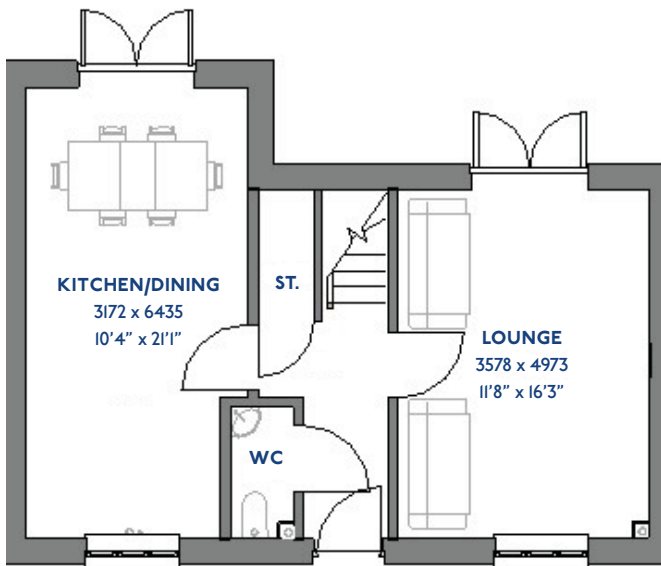
- ♦ Quality and value from a very old established family business with an enviable reputation.
- ♦ Traditional brick construction with a good standard of insulation.
- ♦ Solid internal walls to ground and 1st floor.
- ♦ PVCu windows, soffits and fascias.
- ♦ White Emulsion paint throughout.
- ♦ Fitted Kitchen with Double oven in tall housing, Induction Hob and Flat Bottom Canopy Chimney. Under Pelmet lighting to wall units. A one & half bowl Stainless Steel sink, plumbing and electrics for washing machine, Integrated Fridge Freezer and Dishwasher. White downlighters to Kitchen & pendant fitting to Dining Area of Kitchen (if applicable).
- ♦ Ceramic flooring to Kitchen.
- ♦ Baxi Assure Air Source Heat Pump for hot water and heating with Solar Panels.
- ♦ VEVA Domestic EV Charger (Untethered)
- ♦ White sanitary ware with co-ordinating wall tiles & white downlighters to Bathroom only. Thermostatic shower over bath in Main Bathroom together with a Silver shower screen. Thermostatic shower to En-Suite with co-ordinating wall tiles. Shaver Socket & Chrome Heated Towel Rail to the Bathroom & En-Suite.
- ♦ Cat 5 socket to Lounge next to TV aerial point and Bed 1 & Study (if applicable). TV aerial point in Lounge, Bed 1 & Kitchen/Diner.
- ♦ Intruder Alarm system.
- ♦ Smoke detectors, Carbon Monoxide Alarm and security locks to all external doors. Door Bell. External light to front and rear of property.
- ♦ Outside tap to rear of property.
- ♦ Fenced rear garden. Turfing to front and rear gardens.
- ♦ N.H.B.C 10 year warranty.
- ♦ Carpets from the Jelson selected range.

Please note: This information is only for guidance. Jelson Limited reserve the right to make alterations as necessary in respect of design, dimensions and finish of properties. All dimensions are approximate and for identification purposes only. You are advised to check with our Sales Staff regarding choices and fittings in particular house types. Where an option is indicated, this is subject to the building stage and whether materials have already been ordered. The company's policy is one of continuous improvement both in design and construction and we must therefore, reserve the right to make amendments without notice. The details contained in this leaflet do not form part of, or constitute warranty or part of any contract.

JD315

# The Whinchat

3 bed detached house



\*Please note this property can be built in brick or render.

# Specification

## The Whinchat: 3 bed detached house

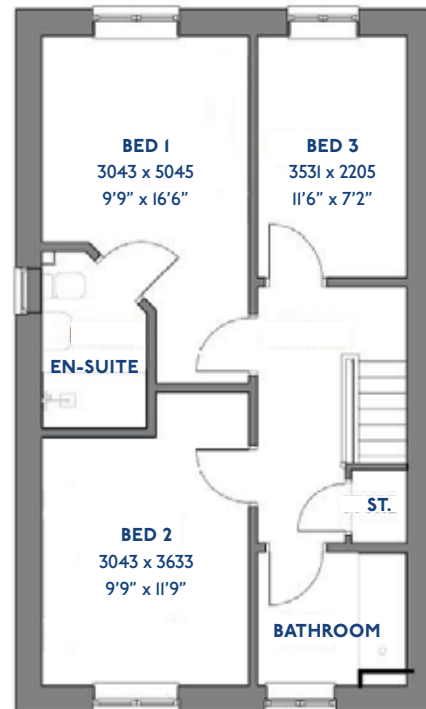
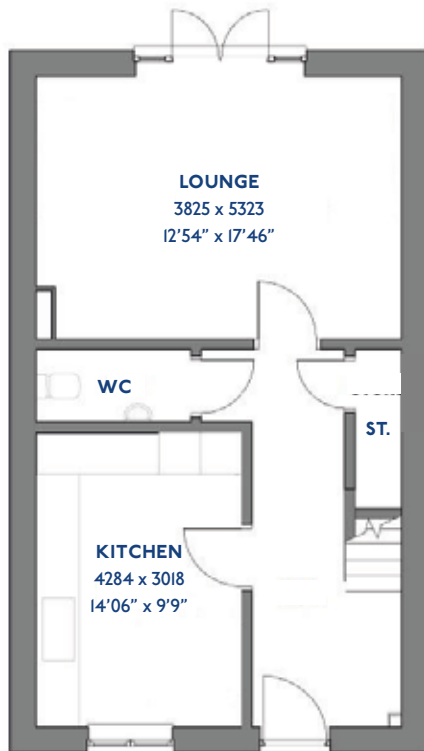
- ♦ Quality and value from a very old established family business with an enviable reputation.
- ♦ Traditional brick construction with a good standard of insulation.
- ♦ Solid internal walls to ground and 1st floor.
- ♦ PVCu windows, soffits and fascias.
- ♦ White Emulsion paint throughout.
- ♦ Fitted Kitchen with Double oven in tall housing, Induction Hob and Flat Bottom Canopy Chimney. Under Pelmet lighting to wall units. A one & half bowl Stainless Steel sink, plumbing and electrics for washing machine, Integrated Fridge Freezer and Dishwasher. White downlighters to Kitchen & pendant fitting to Dining Area of Kitchen (if applicable).
- ♦ Ceramic flooring to Kitchen.
- ♦ Baxi Assure Air Source Heat Pump for hot water and heating with Solar Panels.
- ♦ VEVA Domestic EV Charger (Untethered)
- ♦ White sanitary ware with co-ordinating wall tiles & white downlighters to Bathroom only. Thermostatic shower over bath in Main Bathroom together with a Silver shower screen. Thermostatic shower to En-Suite with co-ordinating wall tiles. Shaver Socket & Chrome Heated Towel Rail to the Bathroom & En-Suite.
- ♦ Cat 5 socket to Lounge next to TV aerial point and Bed 1 & Study (if applicable). TV aerial point in Lounge, Bed 1 & Kitchen/Diner.
- ♦ Intruder Alarm system.
- ♦ Smoke detectors, Carbon Monoxide Alarm and security locks to all external doors. Door Bell. External light to front and rear of property.
- ♦ Outside tap to rear of property.
- ♦ Fenced rear garden. Turfing to front and rear gardens.
- ♦ N.H.B.C 10 year warranty.
- ♦ Carpets from the Jelson selected range.

Please note: This information is only for guidance. Jelson Limited reserve the right to make alterations as necessary in respect of design, dimensions and finish of properties. All dimensions are approximate and for identification purposes only. You are advised to check with our Sales Staff regarding choices and fittings in particular house types. Where an option is indicated, this is subject to the building stage and whether materials have already been ordered. The company's policy is one of continuous improvement both in design and construction and we must therefore, reserve the right to make amendments without notice. The details contained in this leaflet do not form part of, or constitute warranty or part of any contract.

JD319

# The Willowby

3 bed detached house



\*Please note this property can be built in brick or render.

# Specification

## The Willowby: 3 bed detached house

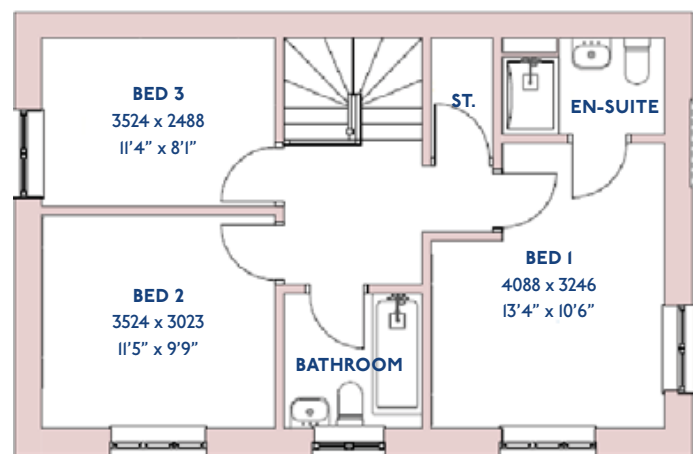
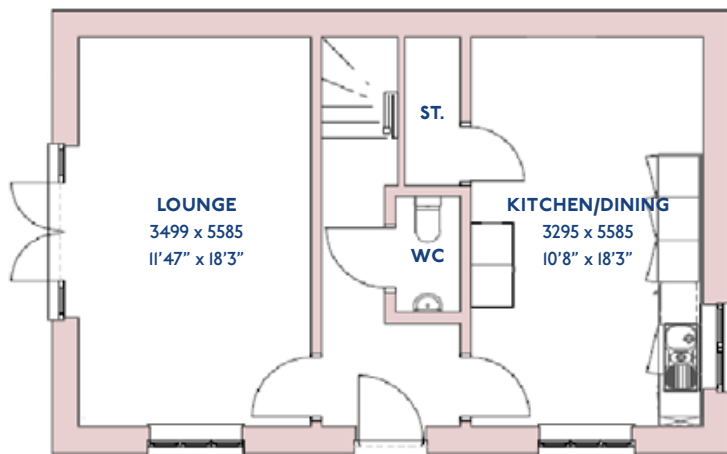
- ♦ Quality and value from a very old established family business with an enviable reputation.
- ♦ Traditional brick construction with a good standard of insulation.
- ♦ Solid internal walls to ground and 1st floor.
- ♦ PVCu windows, soffits and fascias.
- ♦ White Emulsion paint throughout.
- ♦ Fitted Kitchen with Double oven in tall housing, Induction Hob and Flat Bottom Canopy Chimney. Under Pelmet lighting to wall units. A one & half bowl Stainless Steel sink, plumbing and electrics for washing machine, Integrated Fridge Freezer and Dishwasher. White downlighters to Kitchen & pendant fitting to Dining Area of Kitchen (if applicable).
- ♦ Ceramic flooring to Kitchen.
- ♦ Baxi Assure Air Source Heat Pump for hot water and heating with Solar Panels.
- ♦ VEVA Domestic EV Charger (Untethered)
- ♦ White sanitary ware with co-ordinating wall tiles & white downlighters to Bathroom only. Thermostatic shower over bath in Main Bathroom together with a Silver shower screen. Thermostatic shower to En-Suite with co-ordinating wall tiles. Shaver Socket & Chrome Heated Towel Rail to the Bathroom & En-Suite.
- ♦ Cat 5 socket to Lounge next to TV aerial point and Bed 1 & Study (if applicable). TV aerial point in Lounge, Bed 1 & Kitchen/Diner.
- ♦ Intruder Alarm system.
- ♦ Smoke detectors, Carbon Monoxide Alarm and security locks to all external doors. Door Bell. External light to front and rear of property.
- ♦ Outside tap to rear of property.
- ♦ Fenced rear garden. Turfing to front and rear gardens.
- ♦ N.H.B.C 10 year warranty.
- ♦ Carpets from the Jelson selected range.

Please note: This information is only for guidance. Jelson Limited reserve the right to make alterations as necessary in respect of design, dimensions and finish of properties. All dimensions are approximate and for identification purposes only. You are advised to check with our Sales Staff regarding choices and fittings in particular house types. Where an option is indicated, this is subject to the building stage and whether materials have already been ordered. The company's policy is one of continuous improvement both in design and construction and we must therefore, reserve the right to make amendments without notice. The details contained in this leaflet do not form part of, or constitute warranty or part of any contract.

JD326

# The Woodcock

3 bed detached house



\*Please note this property can be built in brick or render.

# Specification

## The Woodcock: 3 bed detached house

- ♦ Quality and value from a very old established family business with an enviable reputation.
- ♦ Traditional brick construction with a good standard of insulation.
- ♦ Solid internal walls to ground and 1st floor.
- ♦ PVCu windows, soffits and fascias.
- ♦ White Emulsion paint throughout.
- ♦ Fitted Kitchen with Double oven in tall housing, Induction Hob and Flat Bottom Canopy Chimney. Under Pelmet lighting to wall units. A one & half bowl Stainless Steel sink, plumbing and electrics for washing machine, Integrated Fridge Freezer and Dishwasher. White downlighters to Kitchen & pendant fitting to Dining Area of Kitchen (if applicable).
- ♦ Ceramic flooring to Kitchen.
- ♦ Baxi Assure Air Source Heat Pump for hot water and heating with Solar Panels.
- ♦ VEVA Domestic EV Charger (Untethered)
- ♦ White sanitary ware with co-ordinating wall tiles & white downlighters to Bathroom only. Thermostatic shower over bath in Main Bathroom together with a Silver shower screen. Thermostatic shower to En-Suite with co-ordinating wall tiles. Shaver Socket & Chrome Heated Towel Rail to the Bathroom & En-Suite.
- ♦ Cat 5 socket to Lounge next to TV aerial point and Bed 1 & Study (if applicable). TV aerial point in Lounge, Bed 1 & Kitchen/Diner.
- ♦ Intruder Alarm system.
- ♦ Smoke detectors, Carbon Monoxide Alarm and security locks to all external doors. Door Bell. External light to front and rear of property.
- ♦ Outside tap to rear of property.
- ♦ Fenced rear garden. Turfing to front and rear gardens.
- ♦ N.H.B.C 10 year warranty.
- ♦ Carpets from the Jelson selected range.

Please note: This information is only for guidance. Jelson Limited reserve the right to make alterations as necessary in respect of design, dimensions and finish of properties. All dimensions are approximate and for identification purposes only. You are advised to check with our Sales Staff regarding choices and fittings in particular house types. Where an option is indicated, this is subject to the building stage and whether materials have already been ordered. The company's policy is one of continuous improvement both in design and construction and we must therefore, reserve the right to make amendments without notice. The details contained in this leaflet do not form part of, or constitute warranty or part of any contract.

# Development Plan

## Fieldfare, Mountsorrel, Phase 2



Please note: This site layout is for illustrative purposes only and is not to scale.

**The Exton**  
3 bedroom homes

**The Heron**  
3 bedroom homes

**The Plover**  
3 bedroom homes

**The Redpoll**  
3 bedroom homes

**The Whinchat**  
3 bedroom homes

**The Willowby**  
3 bedroom homes

**The Woodcock**  
3 bedroom homes

**The Aspen**  
4 bedroom homes

**The Cardinal**  
4 bedroom homes

**The Kingfisher**  
4 bedroom homes

**The Falcon**  
5 bedroom homes

- |                           |              |
|---------------------------|--------------|
| * Red Brick               | △ Grey Tiles |
| * Buff Brick              | △ Red Tiles  |
| # Part Render (Off White) |              |