



Hookhill Reach

📍 off Tickow Lane, Shepshed, Leicestershire, LE12 9BT

On the edge of Shepshed in Leicestershire is our charming development,
Hookhill Reach.

These gorgeous new houses for sale in Shepshed are part of a welcoming community that offers a diverse range of independent shops, schools, health and recreational facilities, many of which are within walking distance of our development. Nearby Loughborough is the next largest town with a sizeable shopping centre, cinema and leisure centres.

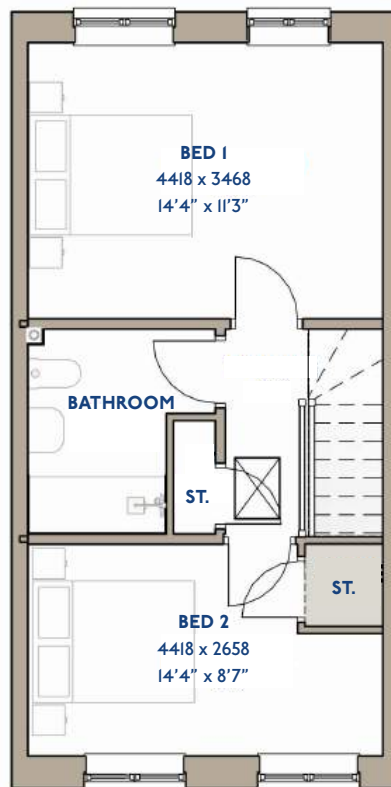
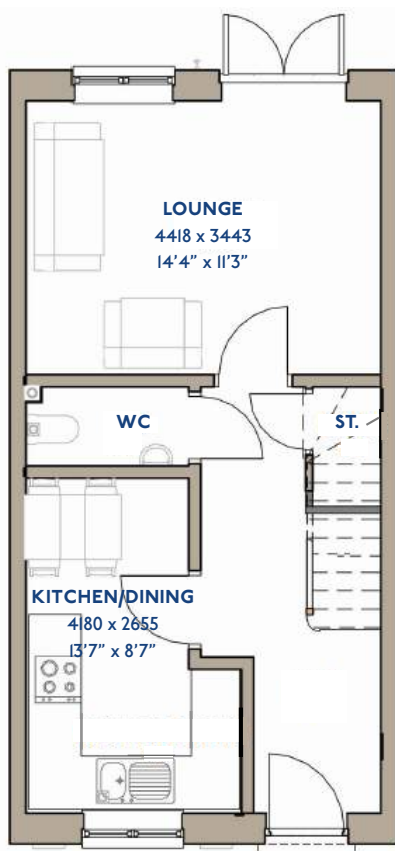
Just off the M1 at Junction 23, our new build homes in Shepshed are perfectly placed for commuting to Nottingham, Derby and Leicester. Travel by rail and air is easy from Loughborough Railway Station and the East Midlands Airport, each only 6 miles away.

FOR OVER **130** YEARS

JS203

The Amber

2 bed semi-detached house



Specification

The Amber: 2 bed semi-detached house

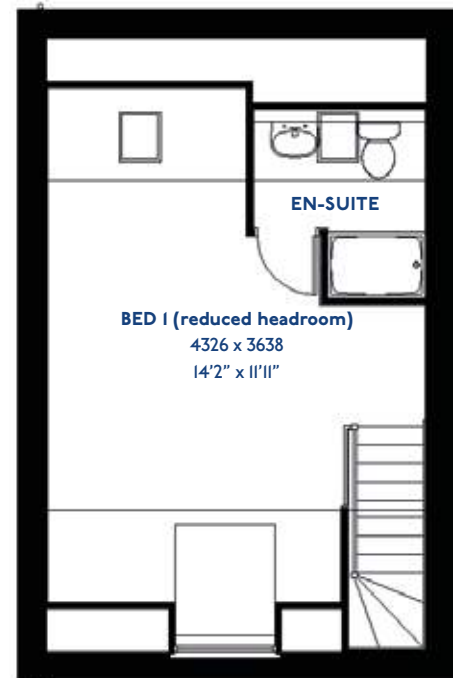
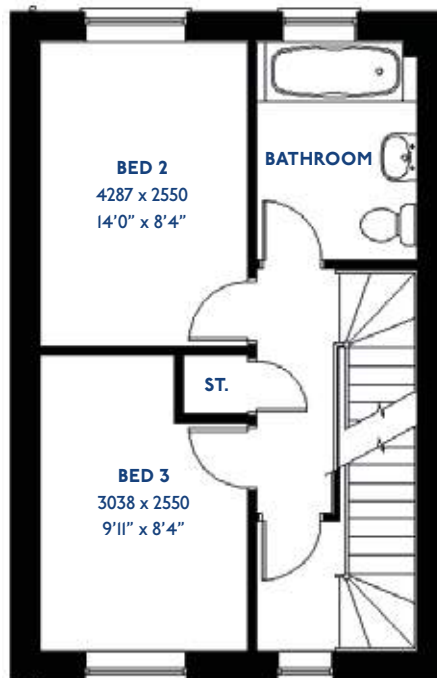
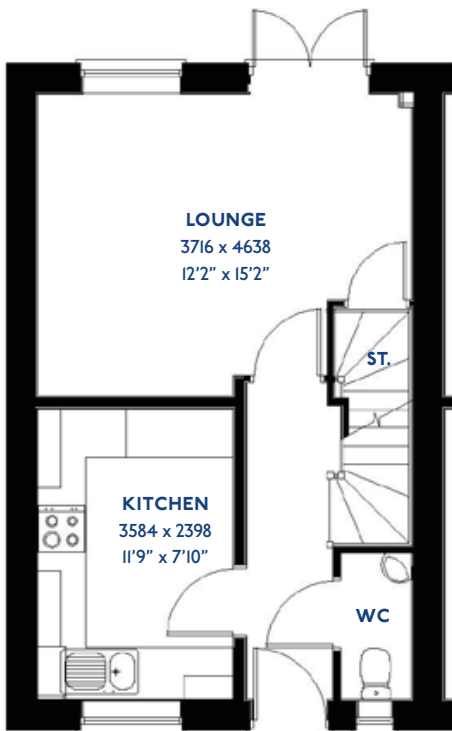
- ♦ Quality and value from a very old established family business with an enviable reputation.
- ♦ Traditional brick construction with a good standard of insulation.
- ♦ Solid internal walls to ground and 1st floor.
- ♦ PVCu windows, soffits and fascias.
- ♦ White Emulsion paint throughout.
- ♦ Fitted Kitchen with Single Oven 4 Burner Gas Hob and Flat Bottom Canopy Chimney. A single bowl Stainless Steel sink, plumbing and electrics for washing machine, Integrated Fridge Freezer and Dishwasher. White downlighters to Kitchen & pendant fitting to Dining Area of Kitchen (if applicable).
- ♦ Ceramic flooring to Kitchen & Utility (if applicable).
- ♦ Full gas central heating (or alternative system if gas not available) with Thermostat.
- ♦ White sanitary ware with co-ordinating wall tiles & white downlighters to Bathroom only. Thermostatic shower over bath in Main Bathroom together with a Silver shower screen. Shaver Socket & Chrome Heated Towel Rail to the Bathroom.
- ♦ Cat 5 socket to Lounge next to TV aerial point and Bed 1 & Study (if applicable). TV aerial point in Lounge, Bed 1 & Kitchen/Diner.
- ♦ Wiring only for future Intruder Alarm for keypad, control panel and bell box.
- ♦ Smoke detectors, Carbon Monoxide Alarm and security locks to all external doors. External light to front and rear of property.
- ♦ Outside tap to rear of property.
- ♦ Fenced rear garden. Turfing to front and rear gardens (where applicable).
- ♦ N.H.B.C 10 year warranty.
- ♦ Carpets from the Jelson selected range.

Please note: This information is only for guidance. Jelson Limited reserve the right to make alterations as necessary in respect of design, dimensions and finish of properties. All dimensions are approximate and for identification purposes only. You are advised to check with our Sales Staff regarding choices and fittings in particular house types. Where an option is indicated, this is subject to the building stage and whether materials have already been ordered. The company's policy is one of continuous improvement both in design and construction and we must therefore, reserve the right to make amendments without notice. The details contained in this leaflet do not form part of, or constitute warranty or part of any contract.

S3/I8

The Bunting

3 bed detached house



*Please note this property can be built in brick or render

Specification

The Bunting: 3 bed detached house

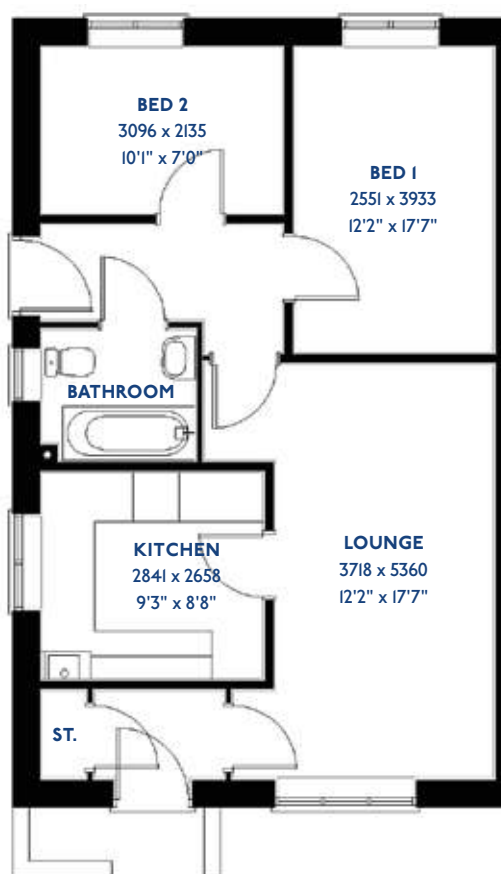
- ♦ Quality and value from a very old established family business with an enviable reputation.
- ♦ Traditional brick construction with a good standard of insulation.
- ♦ Solid internal walls to ground and 1st floor.
- ♦ PVCu windows, soffits and fascias.
- ♦ White Emulsion paint throughout.
- ♦ Fitted Kitchen with Single Oven in tall housing, 4 Burner Gas Hob and Flat Bottom Canopy Chimney. A
single bowl Stainless Steel sink, plumbing and electrics for washing machine, Integrated Fridge Freezer and Dishwasher. White downlighters to Kitchen & pendant fitting to Dining Area of Kitchen (if applicable).
- ♦ Ceramic flooring to Kitchen & Utility (if applicable).
- ♦ Full gas central heating (or alternative system if gas not available) with Thermostat.
- ♦ White sanitary ware with co-ordinating wall tiles & white downlighters to Bathroom only. Thermostatic shower over bath in Main Bathroom together with a Silver shower screen. Thermostatic shower to En-Suite with co-ordinating wall tiles. Shaver Socket & Chrome Heated Towel Rail to the Bathroom & En-Suite.
- ♦ Cat 5 socket to Lounge next to TV aerial point and Bed 1 & Study (if applicable). TV aerial point in Lounge, Bed 1 & Kitchen/Diner.
- ♦ Wiring only for future Intruder Alarm for keypad, control panel and bell box.
- ♦ Smoke detectors, Carbon Monoxide Alarm and security locks to all external doors. Door Bell. External light to front and rear elevation. Outside tap to rear of property.
- ♦ Fenced rear garden. Turfing to front and rear gardens (where applicable).
- ♦ N.H.B.C 10 year warranty.
- ♦ Carpets from the Jelson selected range.

Please note: This information is only for guidance. Jelson Limited reserve the right to make alterations as necessary in respect of design, dimensions and finish of properties. All dimensions are approximate and for identification purposes only. You are advised to check with our Sales Staff regarding choices and fittings in particular house types. Where an option is indicated, this is subject to the building stage and whether materials have already been ordered. The company's policy is one of continuous improvement both in design and construction and we must therefore, reserve the right to make amendments without notice. The details contained in this leaflet do not form part of, or constitute warranty or part of any contract.

SB206B

The Cranmore

2 bed semi-detached bungalow



Specification

The Cranmore: 2 bed semi-detached bungalow

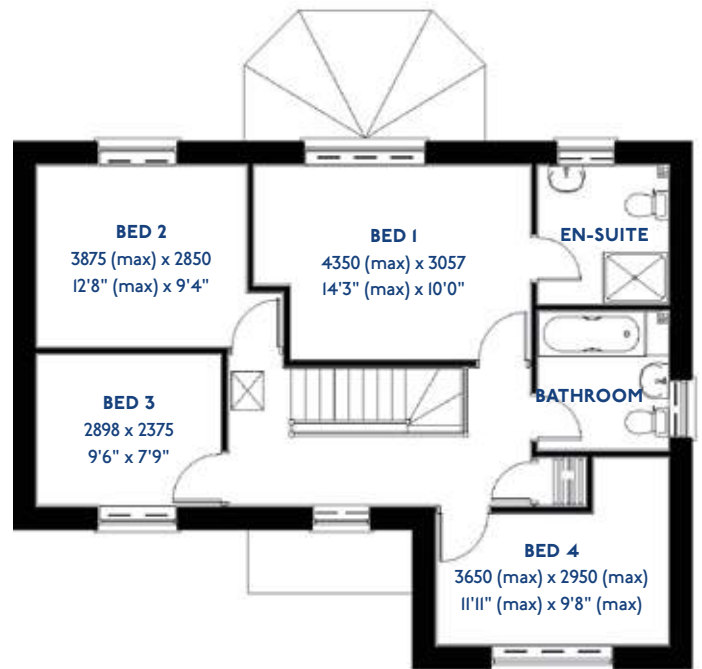
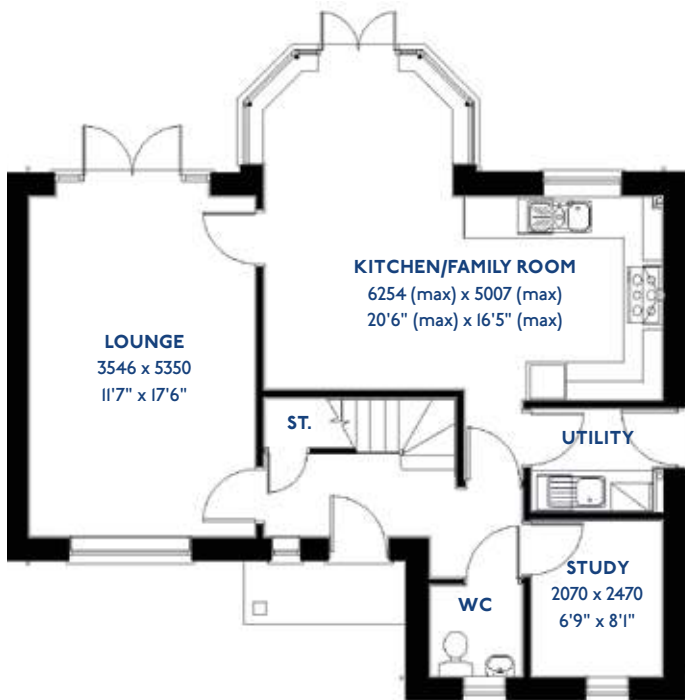
- Quality and value from a very old established family business with an enviable reputation.
- Traditional brick construction with a good standard of insulation.
- Solid internal walls to ground and 1st floor.
- PVCu windows, soffits and fascias.
- White Emulsion paint throughout.
- Fitted Kitchen with Single Oven 4 Burner Gas Hob and Flat Bottom Canopy Chimney. A single bowl Stainless Steel sink, plumbing and electrics for washing machine, Integrated Fridge Freezer and Dishwasher. White downlighters to Kitchen & pendant fitting to Dining Area of Kitchen (if applicable).
- Ceramic flooring to Kitchen & Utility (if applicable).
- Full gas central heating (or alternative system if gas not available) with Thermostat.
- White sanitary ware with co-ordinating wall tiles & white downlighters to Bathroom only. Thermostatic shower over bath in Main Bathroom together with a Silver shower screen. Shaver Socket & Chrome Heated Towel Rail to the Bathroom.
- Cat 5 socket to Lounge next to TV aerial point and Bed I & Study (if applicable). TV aerial point in Lounge, Bed I & Kitchen/Diner. Two mains sockets in Kitchen & Bedroom I.
- Wiring only for future Intruder Alarm for keypad, control panel and bell box.
- Smoke detectors, Carbon Monoxide Alarm and security locks to all external doors. External light to front and rear of property.
- Outside tap to rear of property.
- Fenced rear garden. Turfing to front and rear gardens (where applicable).
- N.H.B.C 10 year warranty.
- Carpets from the Jelson selected range.

Please note: This information is only for guidance. Jelson Limited reserve the right to make alterations as necessary in respect of design, dimensions and finish of properties. All dimensions are approximate and for identification purposes only. You are advised to check with our Sales Staff regarding choices and fittings in particular house types. Where an option is indicated, this is subject to the building stage and whether materials have already been ordered. The company's policy is one of continuous improvement both in design and construction and we must therefore, reserve the right to make amendments without notice. The details contained in this leaflet do not form part of, or constitute warranty or part of any contract.

D4/08

The Egret

4 bed detached house



Specification

The Egret: 4 bed detached house

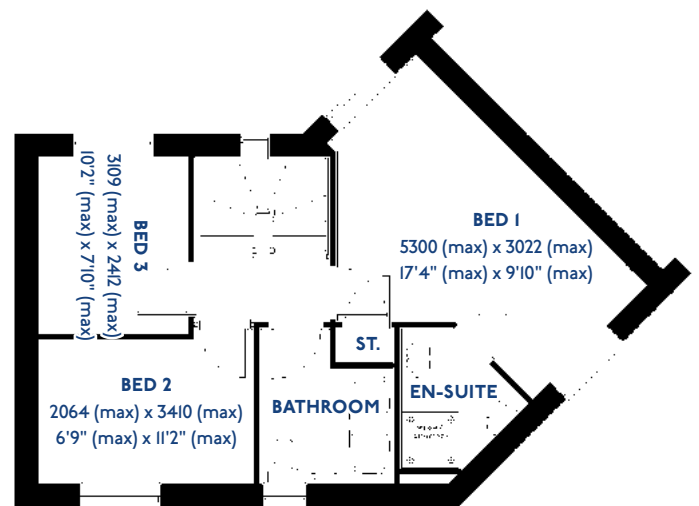
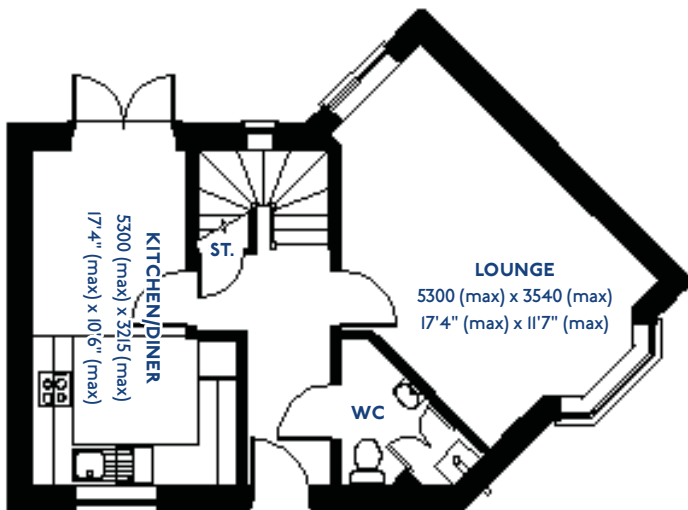
- ♦ Quality and value from a very old established family business with an enviable reputation.
- ♦ Traditional brick construction with a good standard of insulation.
- ♦ Solid internal walls to ground and 1st floor.
- ♦ PVCu windows, soffits and fascias.
- ♦ To include Oak Internal Doors.
- ♦ White Emulsion paint throughout.
- ♦ Fitted Kitchen with Single Oven in tall housing with Combination Microwave Oven, 5 Burner Gas Hob, Flat Bottom Canopy Chimney and Stainless Steel Splashback. Under Pelmet lighting to wall units, Tall larder unit with wirework pull in baskets. A one & half bowl Under Mounted Stainless Steel sink, plumbing and electrics for washing machine, Integrated Fridge Freezer and Dishwasher. White downlighters to Kitchen & pendant fitting to Dining Area of Kitchen (if applicable).
- ♦ Quartz worktop to Kitchen only with quartz upstands.
- ♦ Ceramic flooring to Kitchen & Utility (if applicable).
- ♦ Full gas central heating (or alternative system if gas not available) with Smart Thermostat.
- ♦ White sanitary ware with co-ordinating wall tiles & white downlighters to Bathroom only. Thermostatic shower over bath in Main Bathroom together with a Silver shower screen. Thermostatic shower to En-Suite with co-ordinating wall tiles. Shaver Socket & Chrome Heated Towel Rail to the Bathroom & En-Suite.
- ♦ Cat 5 socket to Lounge next to TV aerial point and Bed 1 & Study (if applicable). TV aerial point in Lounge, Bed 1 & Kitchen/Diner.
- ♦ Intruder Alarm system.
- ♦ Smoke detectors, Carbon Monoxide Alarm and security locks to all external doors. Door Bell. External lights to front and rear of property.
- ♦ Outside tap to rear of property.
- ♦ Fenced rear garden. Turfing to front and rear gardens (where applicable).
- ♦ N.H.B.C 10 year warranty.
- ♦ Carpets from the Jelson selected range.

Please note: This information is only for guidance. Jelson Limited reserve the right to make alterations as necessary in respect of design, dimensions and finish of properties. All dimensions are approximate and for identification purposes only. You are advised to check with our Sales Staff regarding choices and fittings in particular house types. Where an option is indicated, this is subject to the building stage and whether materials have already been ordered. The company's policy is one of continuous improvement both in design and construction and we must therefore, reserve the right to make amendments without notice. The details contained in this leaflet do not form part of, or constitute warranty or part of any contract.

JS322

The Exton

3 bed semi-detached house



Specification

The Exton: 3 bed semi-detached house

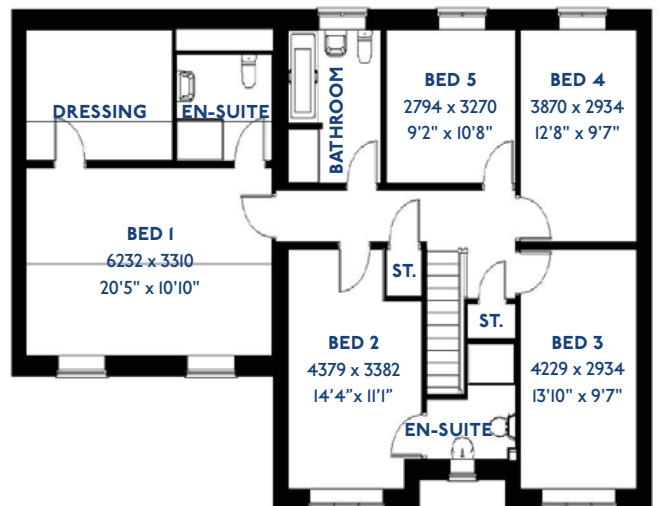
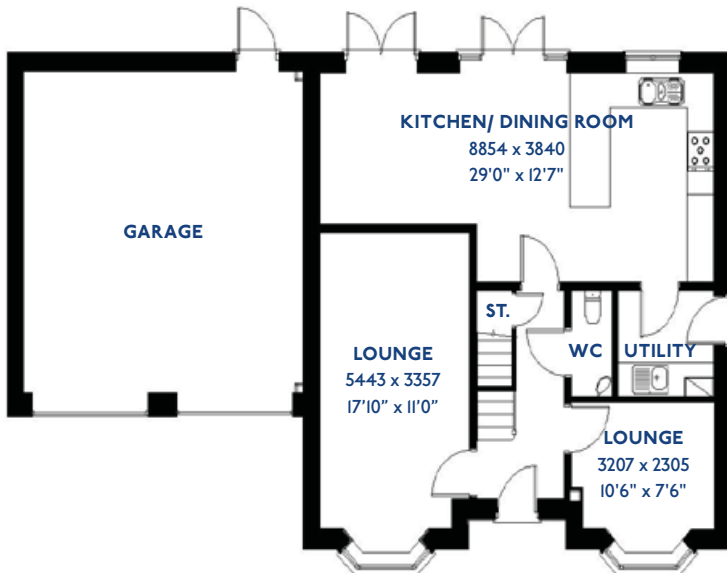
- Quality and value from a very old established family business with an enviable reputation.
- Traditional brick construction with a good standard of insulation.
- Solid internal walls to ground and 1st floor.
- PVCu windows, soffits and fascias.
- White Emulsion paint throughout.
- Fitted Kitchen with Single Oven in tall housing, 4 Burner Gas Hob and Flat Bottom Canopy Chimney. A single bowl Stainless Steel sink, plumbing and electrics for washing machine, Integrated Fridge Freezer and Dishwasher. White downlighters to Kitchen & pendant fitting to Dining Area of Kitchen (if applicable).
- Ceramic flooring to Kitchen & Utility (if applicable).
- Full gas central heating (or alternative system if gas not available) with Thermostat.
- White sanitary ware with co-ordinating wall tiles & white downlighters to Bathroom only. Thermostatic shower over bath in Main Bathroom together with a Silver shower screen. Thermostatic shower to En-Suite with co-ordinating wall tiles. Shaver Socket & Chrome Heated Towel Rail to the Bathroom & En-Suite.
- Cat 5 socket to Lounge next to TV aerial point and Bed 1 & Study (if applicable). TV aerial point in Lounge, Bed 1 & Kitchen/Diner.
- Wiring only for future Intruder Alarm for keypad, control panel and bell box.
- Smoke detectors, Carbon Monoxide Alarm and security locks to all external doors. External light to front and rear of property.
- Outside tap to rear of property.
- Fenced rear garden. Turfing to front and rear gardens (where applicable).
- N.H.B.C 10 year warranty.
- Carpets from the Jelson selected range.

Please note: This information is only for guidance. Jelson Limited reserve the right to make alterations as necessary in respect of design, dimensions and finish of properties. All dimensions are approximate and for identification purposes only. You are advised to check with our Sales Staff regarding choices and fittings in particular house types. Where an option is indicated, this is subject to the building stage and whether materials have already been ordered. The company's policy is one of continuous improvement both in design and construction and we must therefore, reserve the right to make amendments without notice. The details contained in this leaflet do not form part of, or constitute warranty or part of any contract.

D5/04

The Falcon

5 bed detached house



*Please note this property can be built in brick or render

Specification

The Falcon: 5 bed detached house

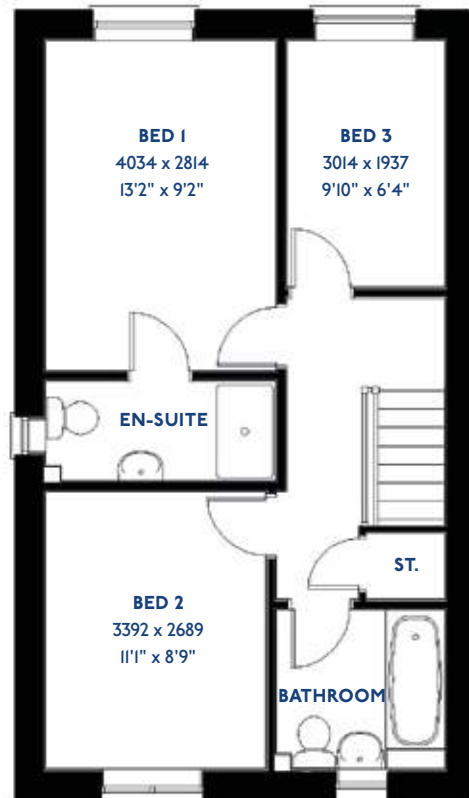
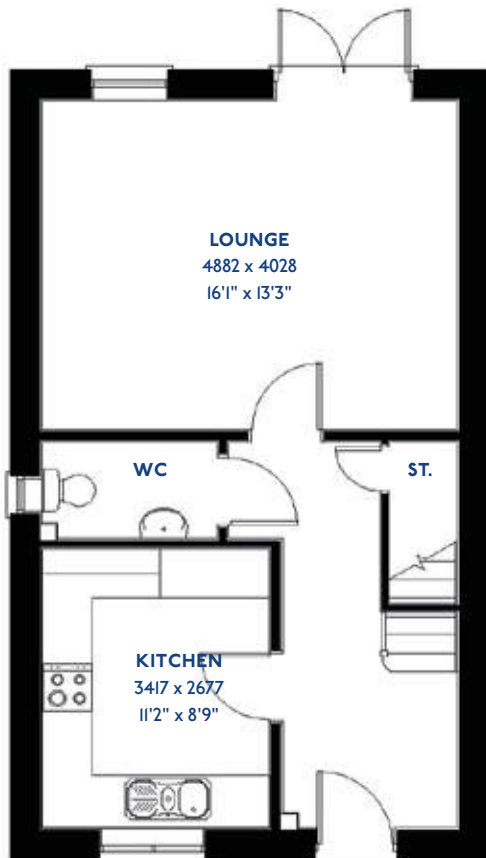
- ♦ Quality and value from a very old established family business with an enviable reputation.
- ♦ Traditional brick construction with a good standard of insulation.
- ♦ Solid internal walls to ground and 1st floor.
- ♦ PVCu windows, soffits and fascias.
- ♦ To include Oak Internal Doors.
- ♦ White Emulsion paint throughout.
- ♦ Fitted Kitchen with Single Oven in tall housing with Combination Microwave Oven, 5 Burner Gas Hob, Flat Bottom Canopy Chimney and Stainless Steel Splashback. Under Pelmet lighting to wall units, small larder unit with wirework pull in baskets. A one & half bowl Under Mounted Stainless Steel sink, plumbing and electrics for washing machine, Integrated Fridge Freezer and Dishwasher. White downlighters to Kitchen & pendant fitting to Dining Area of Kitchen (if applicable).
- ♦ Quartz worktop to Kitchen only with quartz upstands.
- ♦ Ceramic flooring to Kitchen & Utility (if applicable).
- ♦ Full gas central heating with Smart Thermostat.
- ♦ White sanitary ware with co-ordinating wall tiles & white downlighters to Bathroom only. Thermostatic shower over bath in Main Bathroom together with a Silver shower screen. Shaver Socket & Chrome Heated Towel Rail to the Bathroom.
- ♦ Cat 5 socket to Lounge next to TV aerial point and Bed 1 & Study (if applicable). TV aerial point in Lounge, Bed 1 & Kitchen/Diner.
- ♦ Intruder Alarm system.
- ♦ Smoke detectors, Carbon Monoxide Alarm and security locks to all external doors. Door Bell. External light to front and rear of property.
- ♦ Outside tap to rear of property.
- ♦ Fenced rear garden. Turfing to front and rear gardens (where applicable).
- ♦ N.H.B.C 10 year warranty.
- ♦ Carpets from the Jelson selected range.

Please note: This information is only for guidance. Jelson Limited reserve the right to make alterations as necessary in respect of design, dimensions and finish of properties. All dimensions are approximate and for identification purposes only. You are advised to check with our Sales Staff regarding choices and fittings in particular house types. Where an option is indicated, this is subject to the building stage and whether materials have already been ordered. The company's policy is one of continuous improvement both in design and construction and we must therefore, reserve the right to make amendments without notice. The details contained in this leaflet do not form part of, or constitute warranty or part of any contract.

D3/I9/B

The Goldcrest

3 bed detached house



Specification

The Goldcrest: 3 bed detached house

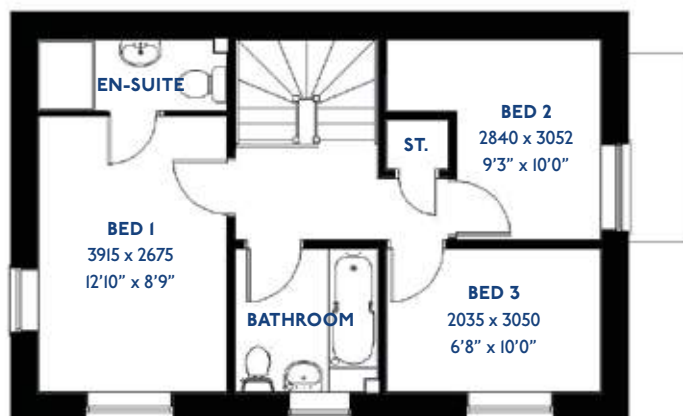
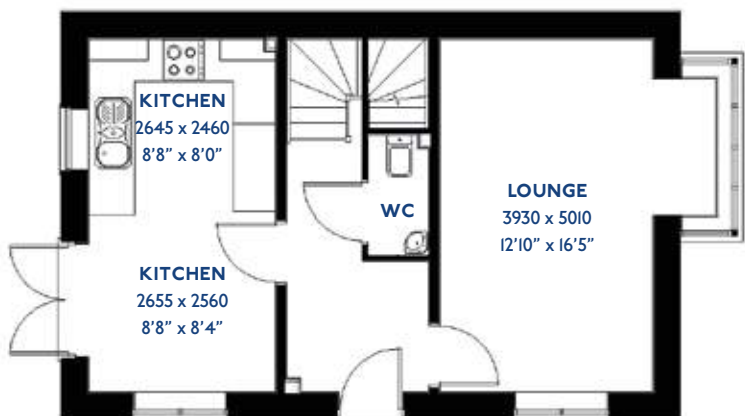
- ♦ Quality and value from a very old established family business with an enviable reputation.
- ♦ Traditional brick construction with a good standard of insulation.
- ♦ Solid internal walls to ground and 1st floor.
- ♦ PVCu windows, soffits and fascias.
- ♦ White Emulsion paint throughout.
- ♦ Fitted Kitchen with Double Oven in tall housing, 4 Burner Gas Hob and Flat Bottom Canopy Chimney. Under Pelmet lighting to wall units. A one & half bowl Stainless Steel sink, plumbing and electrics for washing machine, Integrated Fridge Freezer and Dishwasher. White downlighters to Kitchen & pendant fitting to Dining Area of Kitchen (if applicable).
- ♦ Ceramic flooring to Kitchen & Utility (if applicable).
- ♦ Full gas central heating (or alternative system if gas not available) with Thermostat.
- ♦ White sanitary ware with co-ordinating wall tiles & white downlighters to Bathroom only. Thermostatic shower over bath in Main Bathroom together with a Silver shower screen. Thermostatic shower to En-Suite with co-ordinating wall tiles. Shaver Socket & Chrome Heated Towel Rail to the Bathroom & En-Suite.
- ♦ Cat 5 socket to Lounge next to TV aerial point and Bed 1 & Study (if applicable). TV aerial point in Lounge, Bed 1 & Kitchen/Diner.
- ♦ Intruder Alarm system.
- ♦ Smoke detectors, Carbon Monoxide Alarm and security locks to all external doors. Door Bell. External light to front and rear of property.
- ♦ Outside tap to rear of property.
- ♦ Fenced rear garden. Turfing to front and rear gardens (where applicable).
- ♦ N.H.B.C 10 year warranty.
- ♦ Carpets from the Jelson selected range.

Please note: This information is only for guidance. Jelson Limited reserve the right to make alterations as necessary in respect of design, dimensions and finish of properties. All dimensions are approximate and for identification purposes only. You are advised to check with our Sales Staff regarding choices and fittings in particular house types. Where an option is indicated, this is subject to the building stage and whether materials have already been ordered. The company's policy is one of continuous improvement both in design and construction and we must therefore, reserve the right to make amendments without notice. The details contained in this leaflet do not form part of, or constitute warranty or part of any contract.

D3/12

The Goodwood

3 bed detached house



Specification

The Goodwood: 3 bed detached house

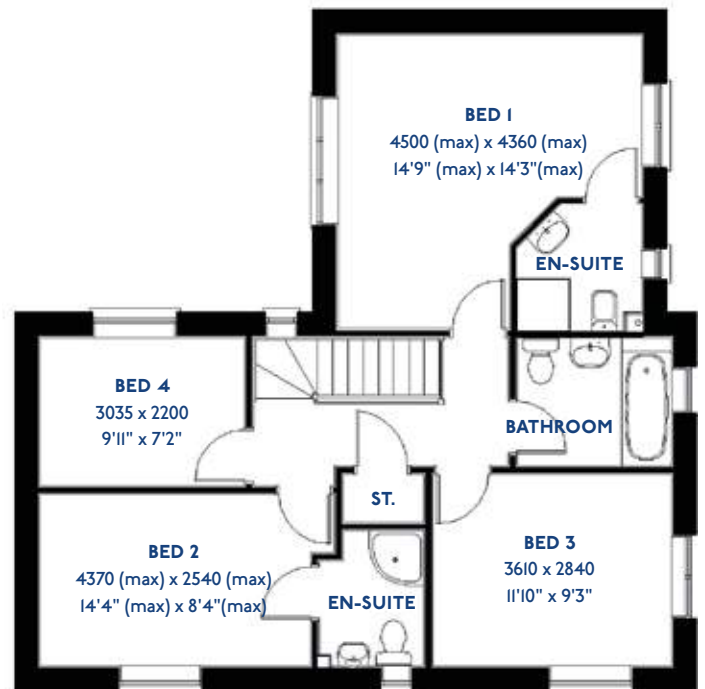
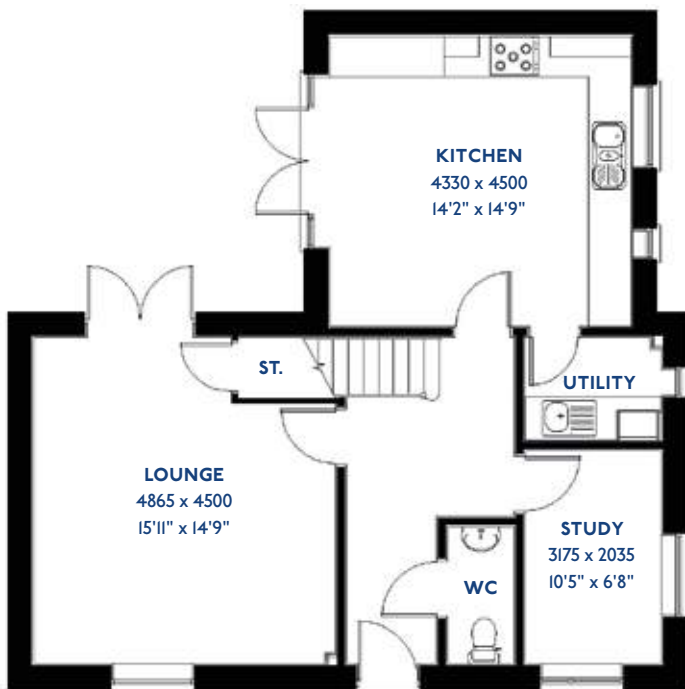
- ♦ Quality and value from a very old established family business with an enviable reputation.
- ♦ Traditional brick construction with a good standard of insulation.
- ♦ Solid internal walls to ground and 1st floor.
- ♦ PVCu windows, soffits and fascias.
- ♦ White Emulsion paint throughout.
- ♦ Fitted Kitchen with Double oven in tall housing, 4 Burner Gas Hob and Flat Bottom Canopy Chimney. Under Pelmet lighting to wall units. A one & half bowl Stainless Steel sink, plumbing and electrics for washing machine, Integrated Fridge Freezer and Dishwasher. White downlighters to Kitchen & pendant fitting to Dining Area of Kitchen (if applicable).
- ♦ Ceramic flooring to Kitchen.
- ♦ Full gas central heating with Thermostat.
- ♦ White sanitary ware with co-ordinating wall tiles & white downlighters to Bathroom only. Thermostatic shower over bath in Main Bathroom together with a Silver shower screen. Thermostatic shower to En-Suite with co-ordinating wall tiles. Shaver Socket & Chrome Heated Towel Rail to the Bathroom & En-Suite.
- ♦ Cat 5 socket to Lounge next to TV aerial point and Bed 1 & Study (if applicable). TV aerial point in Lounge, Bed 1 & Kitchen/Diner.
- ♦ Intruder Alarm system.
- ♦ Smoke detectors, Carbon Monoxide Alarm and security locks to all external doors. Door Bell. External light to front and rear of property.
- ♦ Outside tap to rear of property.
- ♦ Fenced rear garden. Turfing to front and rear gardens.
- ♦ N.H.B.C 10 year warranty.
- ♦ Carpets from the Jelson selected range.

Please note: This information is only for guidance. Jelson Limited reserve the right to make alterations as necessary in respect of design, dimensions and finish of properties. All dimensions are approximate and for identification purposes only. You are advised to check with our Sales Staff regarding choices and fittings in particular house types. Where an option is indicated, this is subject to the building stage and whether materials have already been ordered. The company's policy is one of continuous improvement both in design and construction and we must therefore, reserve the right to make amendments without notice. The details contained in this leaflet do not form part of, or constitute warranty or part of any contract.

D4/23

The Hillstar

4 bed detached house



Specification

The Hillstar: 4 bed detached house

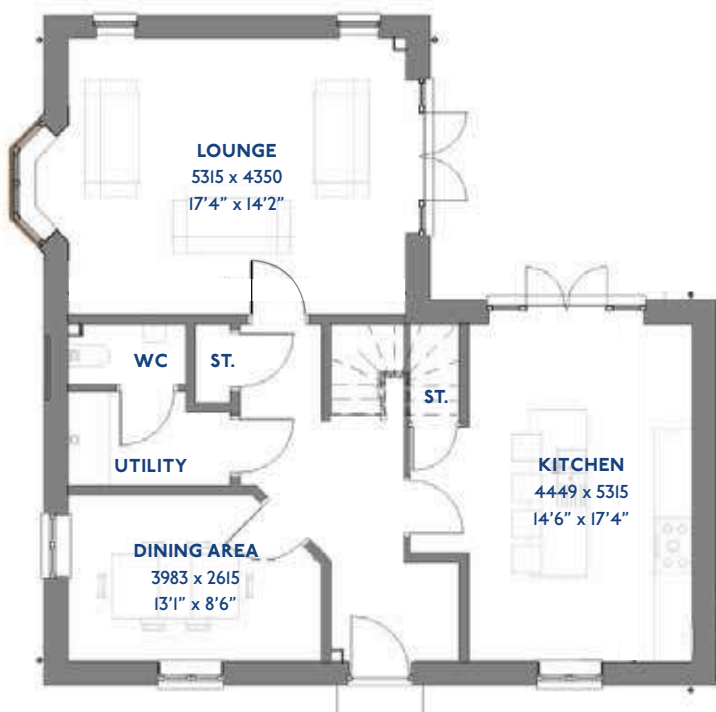
- ♦ Quality and value from a very old established family business with an enviable reputation.
- ♦ Traditional brick construction with a good standard of insulation.
- ♦ Solid internal walls to ground and 1st floor.
- ♦ PVCu windows, soffits and fascias.
- ♦ To include Oak Internal Doors.
- ♦ White Emulsion paint throughout.
- ♦ Fitted Kitchen with Single Oven in tall housing with Combination Microwave Oven, 5 Burner Gas Hob, Flat Bottom Canopy Chimney and Stainless Steel Splashback. Under Pelmet lighting to wall units, Tall larder unit with wirework pull in baskets. A one & half bowl Under Mounted Stainless Steel sink, plumbing and electrics for washing machine, Integrated Fridge Freezer and Dishwasher. White downlighters to Kitchen & pendant fitting to Dining Area of Kitchen (if applicable).
- ♦ Quartz worktop to Kitchen only with quartz upstands.
- ♦ Ceramic flooring to Kitchen & Utility (if applicable).
- ♦ Full gas central heating (or alternative system if gas not available) with Smart Thermostat.
- ♦ White sanitary ware with co-ordinating wall tiles & white downlighters to Bathroom only. Thermostatic shower over bath in Main Bathroom together with a Silver shower screen. Thermostatic shower to En-Suite with co-ordinating wall tiles. Shaver Socket & Chrome Heated Towel Rail to the Bathroom & En-Suite.
- ♦ Cat 5 socket to Lounge next to TV aerial point and Bed 1 & Study (if applicable). TV aerial point in Lounge, Bed 1 & Kitchen/Diner.
- ♦ Intruder Alarm system.
- ♦ Smoke detectors, Carbon Monoxide Alarm and security locks to all external doors. Door Bell. External lights to front and rear of property.
- ♦ Outside tap to rear of property.
- ♦ Fenced rear garden. Turfing to front and rear gardens (where applicable).
- ♦ N.H.B.C 10 year warranty.
- ♦ Carpets from the Jelson selected range.

Please note: This information is only for guidance. Jelson Limited reserve the right to make alterations as necessary in respect of design, dimensions and finish of properties. All dimensions are approximate and for identification purposes only. You are advised to check with our Sales Staff regarding choices and fittings in particular house types. Where an option is indicated, this is subject to the building stage and whether materials have already been ordered. The company's policy is one of continuous improvement both in design and construction and we must therefore, reserve the right to make amendments without notice. The details contained in this leaflet do not form part of, or constitute warranty or part of any contract.

JD42I

The Kingfisher

4 bed detached house



*Please note this property can be built in brick or render

Specification

The Kingfisher: 4 bed detached house

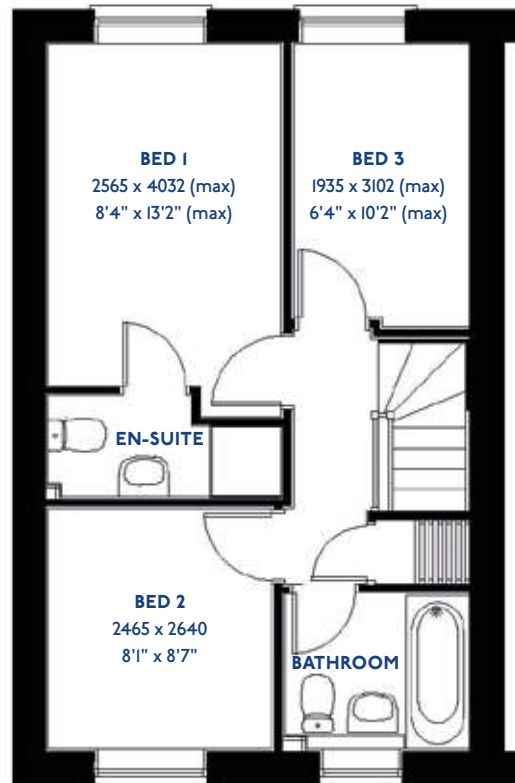
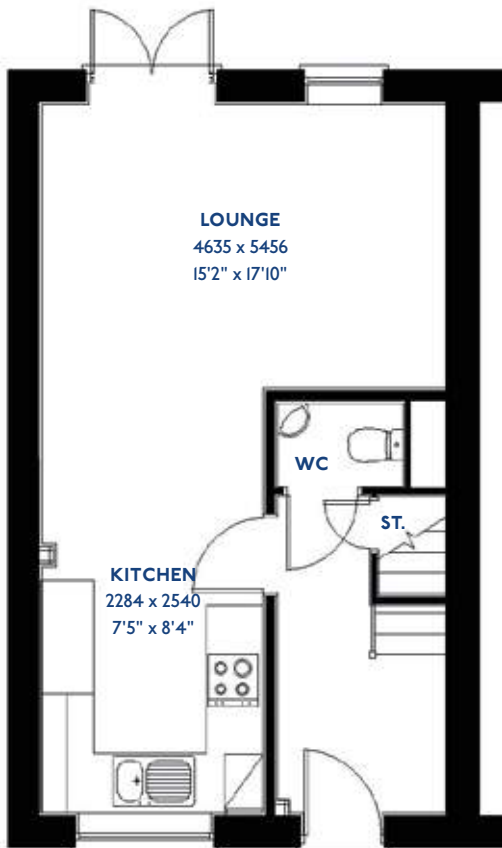
- ♦ Quality and value from a very old established family business with an enviable reputation.
- ♦ Traditional brick construction with a good standard of insulation.
- ♦ Solid internal walls to ground and 1st floor.
- ♦ PVCu windows, soffits and fascias.
- ♦ To include Oak Internal Doors.
- ♦ White Emulsion paint throughout.
- ♦ Fitted Kitchen with Single Oven in tall housing with Combination Microwave Oven, 5 Burner Gas Hob, Flat Bottom Canopy Chimney and Stainless Steel Splashback. Under Pelmet lighting to wall units, small larder unit with wirework pull in baskets. A one & half bowl Under Mounted Stainless Steel sink, plumbing and electrics for washing machine, Integrated Fridge Freezer and Dishwasher. White downlighters to Kitchen & pendant fitting to Dining Area of Kitchen (if applicable).
- ♦ Quartz worktop to Kitchen only with quartz upstands.
- ♦ Ceramic flooring to Kitchen & Utility (if applicable).
- ♦ Full gas central heating with Smart Thermostat.
- ♦ White sanitary ware with co-ordinating wall tiles & white downlighters to Bathroom only. Thermostatic shower over bath in Main Bathroom together with a Silver shower screen. Shaver Socket & Chrome Heated Towel Rail to the Bathroom.
- ♦ Cat 5 socket to Lounge next to TV aerial point and Bed 1 & Study (if applicable). TV aerial point in Lounge, Bed 1 & Kitchen/Diner.
- ♦ Intruder Alarm system.
- ♦ Smoke detectors, Carbon Monoxide Alarm and security locks to all external doors. Door Bell. External light to front and rear of property.
- ♦ Outside tap to rear of property.
- ♦ Fenced rear garden. Turfing to front and rear gardens (where applicable).
- ♦ N.H.B.C 10 year warranty.
- ♦ Carpets from the Jelson selected range.

Please note: This information is only for guidance. Jelson Limited reserve the right to make alterations as necessary in respect of design, dimensions and finish of properties. All dimensions are approximate and for identification purposes only. You are advised to check with our Sales Staff regarding choices and fittings in particular house types. Where an option is indicated, this is subject to the building stage and whether materials have already been ordered. The company's policy is one of continuous improvement both in design and construction and we must therefore, reserve the right to make amendments without notice. The details contained in this leaflet do not form part of, or constitute warranty or part of any contract.

T3/04 & S3/04

The Plover

3 bed mews & semi-detached houses



Specification

The Plover: 3 bed mews & semi-detached houses

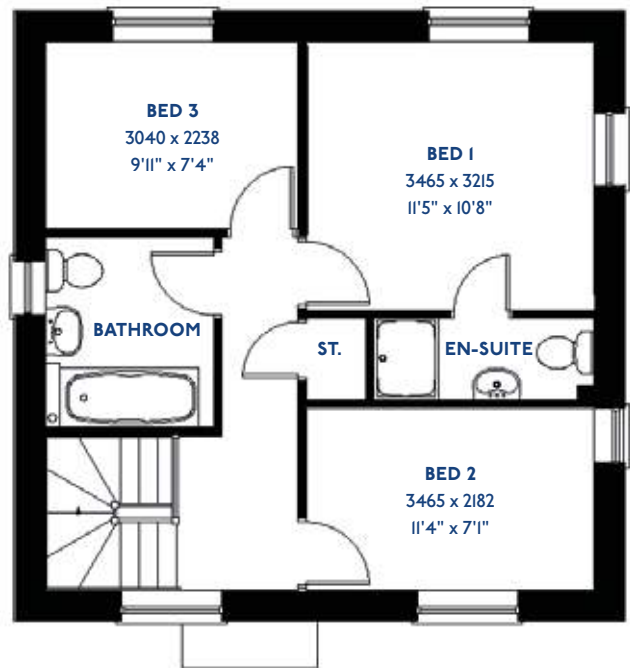
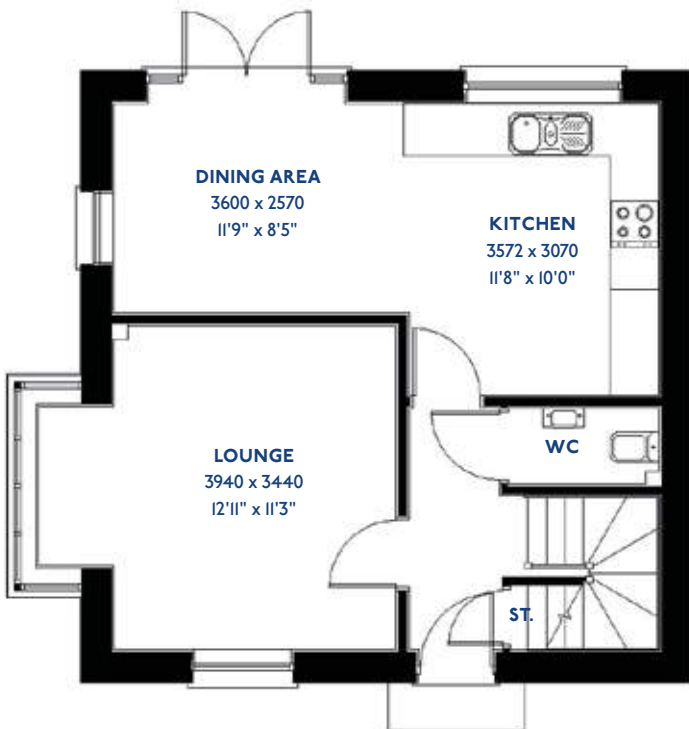
- Quality and value from a very old established family business with an enviable reputation.
- Traditional brick construction with a good standard of insulation.
- Solid internal walls to ground and 1st floor.
- PVCu windows, soffits and fascias.
- White Emulsion paint throughout.
- Fitted Kitchen with Single Oven in tall housing, 4 Burner Gas Hob and Flat Bottom Canopy Chimney. A single bowl Stainless Steel sink, plumbing and electrics for washing machine, Integrated Fridge Freezer and Dishwasher. White downlighters to Kitchen & pendant fitting to Dining Area of Kitchen (if applicable).
- Ceramic flooring to Kitchen & Utility (if applicable).
- Full gas central heating (or alternative system if gas not available) with Thermostat.
- White sanitary ware with co-ordinating wall tiles & white downlighters to Bathroom only. Thermostatic shower over bath in Main Bathroom together with a Silver shower screen. Thermostatic shower to En-Suite with co-ordinating wall tiles. Shaver Socket & Chrome Heated Towel Rail to the Bathroom & En-Suite.
- Cat 5 socket to Lounge next to TV aerial point and Bed 1 & Study (if applicable). TV aerial point in Lounge, Bed 1 & Kitchen/Diner.
- Wiring only for future Intruder Alarm for keypad, control panel and bell box.
- Smoke detectors, Carbon Monoxide Alarm and security locks to all external doors. External light to front and rear of property.
- Outside tap to rear of property.
- Fenced rear garden. Turfing to front and rear gardens (where applicable).
- N.H.B.C 10 year warranty.
- Carpets from the Jelson selected range.

Please note: This information is only for guidance. Jelson Limited reserve the right to make alterations as necessary in respect of design, dimensions and finish of properties. All dimensions are approximate and for identification purposes only. You are advised to check with our Sales Staff regarding choices and fittings in particular house types. Where an option is indicated, this is subject to the building stage and whether materials have already been ordered. The company's policy is one of continuous improvement both in design and construction and we must therefore, reserve the right to make amendments without notice. The details contained in this leaflet do not form part of, or constitute warranty or part of any contract.

D3/31/K

The Redpoll

3 bed detached house



*Please note this property can be built in brick or render

Specification

The Redpoll: 3 bed detached house

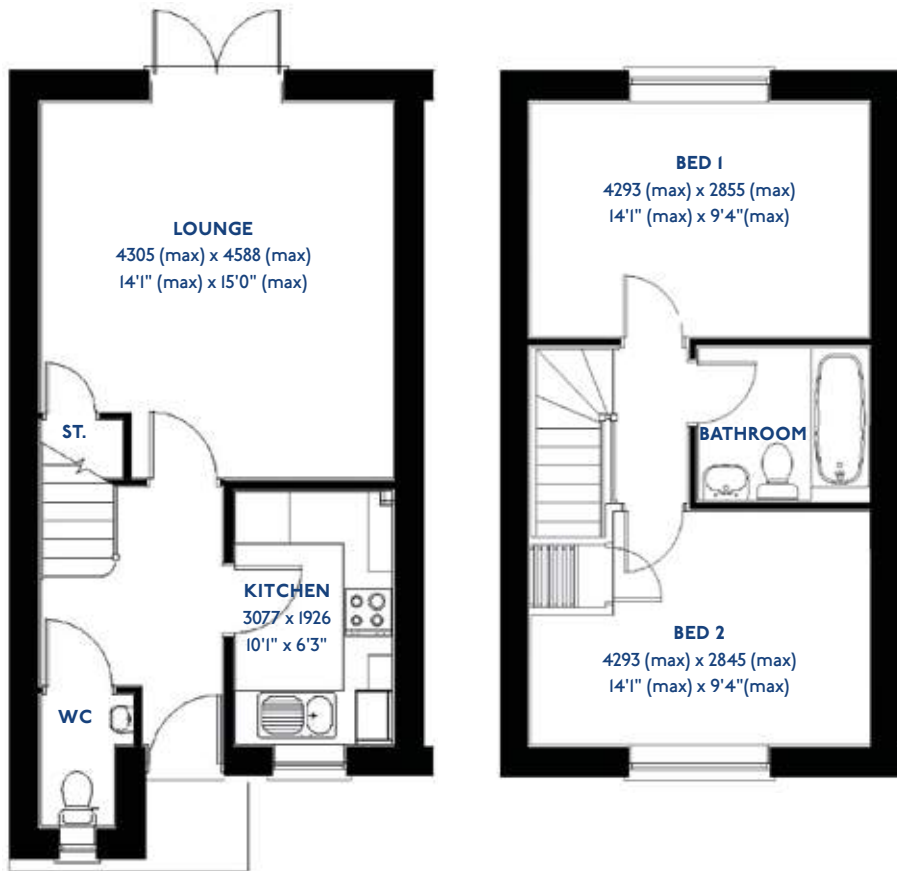
- ♦ Quality and value from a very old established family business with an enviable reputation.
- ♦ Traditional brick construction with a good standard of insulation.
- ♦ Solid internal walls to ground and 1st floor.
- ♦ PVCu windows, soffits and fascias.
- ♦ White Emulsion paint throughout.
- ♦ Fitted Kitchen with Double Oven in tall housing, 4 Burner Gas Hob and Flat Bottom Canopy Chimney. Under Pelmet lighting to wall units (if applicable). A one & half bowl Stainless Steel sink, plumbing and electrics for washing machine, Integrated Fridge Freezer and Dishwasher. White downlighters to Kitchen & pendant fitting to Dining Area of Kitchen (if applicable).
- ♦ Ceramic flooring to Kitchen & Utility (if applicable).
- ♦ Full gas central heating (or alternative system if gas not available) with Thermostat.
- ♦ White sanitary ware with co-ordinating wall tiles & white downlighters to Bathroom only. Thermostatic shower over bath in Main Bathroom together with a Silver shower screen. Thermostatic shower to En-Suite with co-ordinating wall tiles. Shaver Socket & Chrome Heated Towel Rail to the Bathroom & En-Suite.
- ♦ Cat 5 socket to Lounge next to TV aerial point and Bed 1 & Study (if applicable). TV aerial point in Lounge, Bed 1 & Kitchen/Diner.
- ♦ Intruder Alarm system.
- ♦ Smoke detectors, Carbon Monoxide Alarm and security locks to all external doors. Door Bell. External light to front and rear of property.
- ♦ Outside tap to rear of property.
- ♦ Fenced rear garden. Turfing to front and rear gardens (where applicable).
- ♦ N.H.B.C 10 year warranty.
- ♦ Carpets from the Jelson selected range.

Please note: This information is only for guidance. Jelson Limited reserve the right to make alterations as necessary in respect of design, dimensions and finish of properties. All dimensions are approximate and for identification purposes only. You are advised to check with our Sales Staff regarding choices and fittings in particular house types. Where an option is indicated, this is subject to the building stage and whether materials have already been ordered. The company's policy is one of continuous improvement both in design and construction and we must therefore, reserve the right to make amendments without notice. The details contained in this leaflet do not form part of, or constitute warranty or part of any contract.

S2/02

The Sanderling

2 bed semi-detached house



Specification

The Sanderling: 2 bed semi-detached house

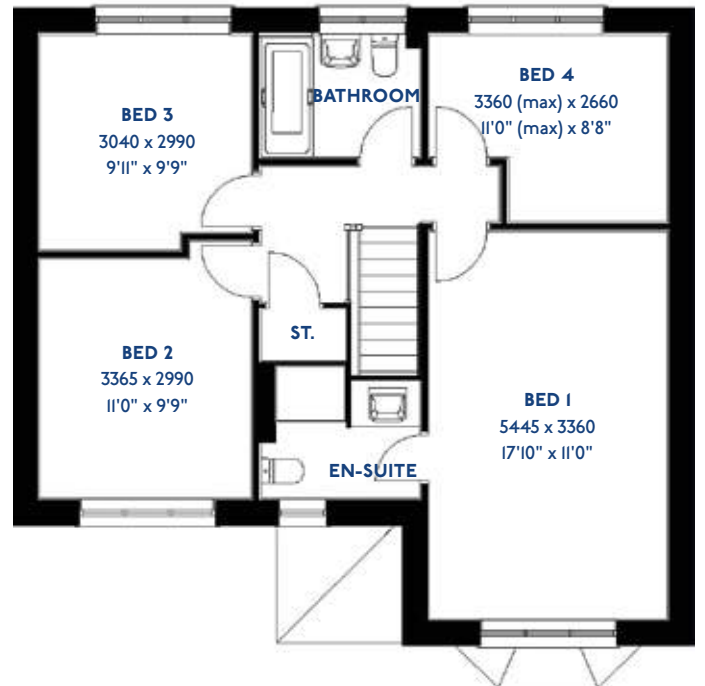
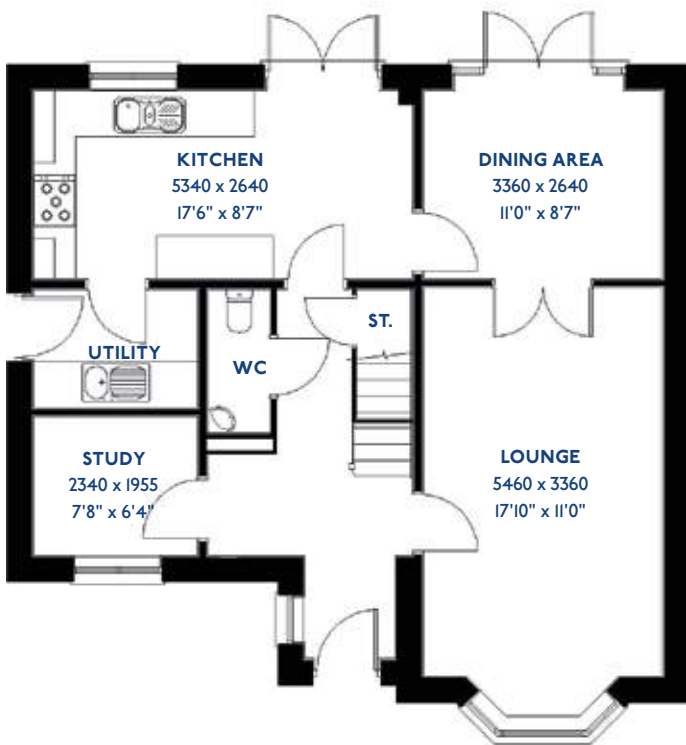
- Quality and value from a very old established family business with an enviable reputation.
- Traditional brick construction with a good standard of insulation.
- Solid internal walls to ground and 1st floor.
- PVCu windows, soffits and fascias.
- White Emulsion paint throughout.
- Fitted Kitchen with Single Oven 4 Burner Gas Hob and Flat Bottom Canopy Chimney. A single bowl Stainless Steel sink, plumbing and electrics for washing machine, Integrated Fridge Freezer and Dishwasher. White downlighters to Kitchen & pendant fitting to Dining Area of Kitchen (if applicable).
- Ceramic flooring to Kitchen & Utility (if applicable).
- Full gas central heating (or alternative system if gas not available) with Thermostat.
- White sanitary ware with co-ordinating wall tiles & white downlighters to Bathroom only. Thermostatic shower over bath in Main Bathroom together with a Silver shower screen. Shaver Socket & Chrome Heated Tower Rail to the Bathroom & Ensuite.
- Cat 5 socket to Lounge next to TV aerial point and Bed 1 & Study (if applicable). TV aerial point in Lounge, Bed 1 & Kitchen/Diner.
- Wiring only for future Intruder Alarm for keypad, control panel and bell box.
- Smoke detectors, Carbon Monoxide Alarm and security locks to all external doors. External light to front and rear of property.
- Outside tap to rear of property.
- Fenced rear garden. Turfing to front and rear gardens (where applicable).
- N.H.B.C 10 year warranty.
- Carpets from the Jelson selected range.

Please note: This information is only for guidance. Jelson Limited reserve the right to make alterations as necessary in respect of design, dimensions and finish of properties. All dimensions are approximate and for identification purposes only. You are advised to check with our Sales Staff regarding choices and fittings in particular house types. Where an option is indicated, this is subject to the building stage and whether materials have already been ordered. The company's policy is one of continuous improvement both in design and construction and we must therefore, reserve the right to make amendments without notice. The details contained in this leaflet do not form part of, or constitute warranty or part of any contract.

D4/11

The Saunton

4 bed detached house



Specification

The Saunton: 4 bed detached house

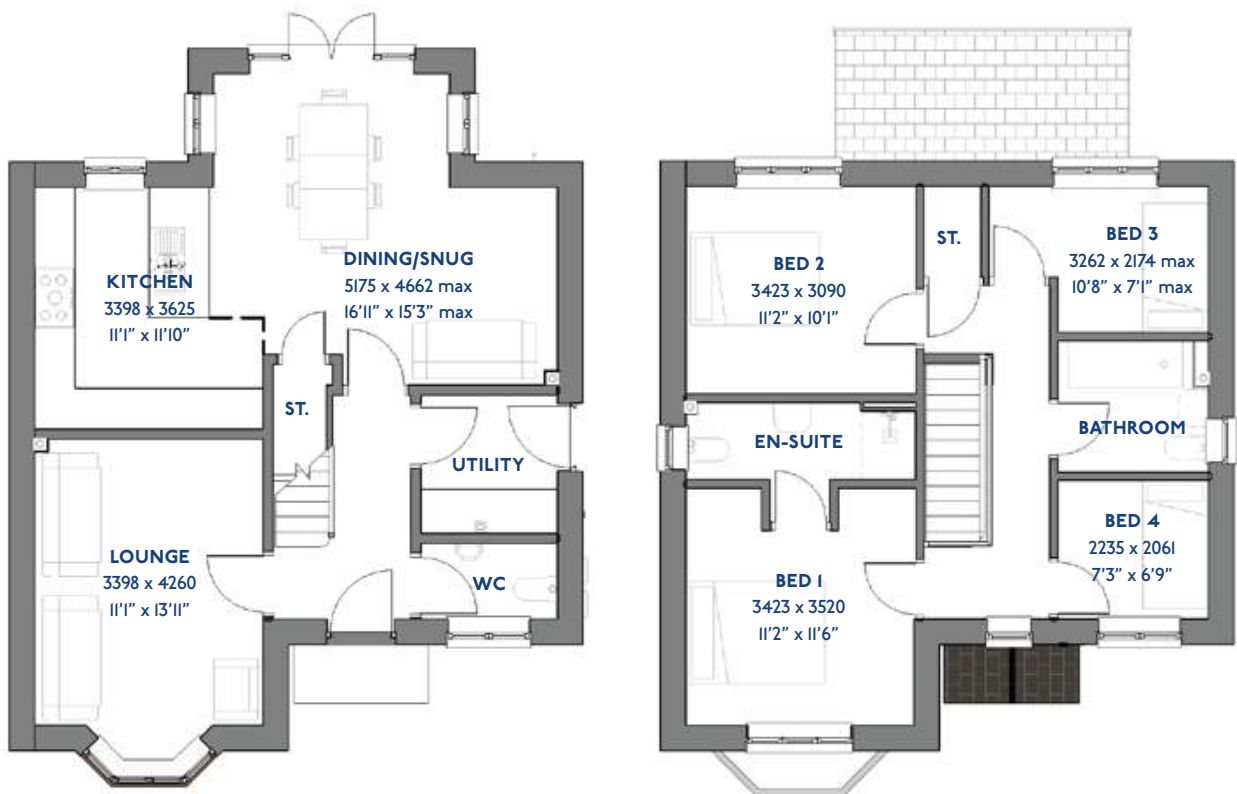
- ♦ Quality and value from a very old established family business with an enviable reputation.
- ♦ Traditional brick construction with a good standard of insulation.
- ♦ Solid internal walls to ground and 1st floor.
- ♦ PVCu windows, soffits and fascia's.
- ♦ To include Oak Internal Doors.
- ♦ White Emulsion paint throughout.
- ♦ Fitted Kitchen with Single Oven in tall housing with Combination Microwave Oven, 5 Burner Gas Hob, Flat Bottom Canopy Chimney and Stainless Steel Splashback. Under Pelmet lighting to wall units, Tall larder unit with wirework pull in baskets. A one & half bowl Under Mounted Stainless Steel sink, plumbing and electrics for washing machine, Integrated Fridge Freezer and Dishwasher. White downlighters to Kitchen & pendant fitting to Dining Area of Kitchen.
- ♦ Quartz worktop to Kitchen only with quartz upstands.
- ♦ Ceramic flooring to Kitchen & Utility.
- ♦ Full gas central heating with Smart Thermostat.
- ♦ White sanitary ware with co-ordinating wall tiles & white downlighters to Bathroom only. Thermostatic shower over bath in Main Bathroom together with a Silver shower screen. Thermostatic shower to Ensuite with co-ordinating wall tiles. Shaver Socket & Chrome Heated Towel Rail to the Bathroom & Ensuite.
- ♦ Vanity unit in Ensuite.
- ♦ Cat 5 socket to Lounge next to TV aerial point and Bed 1 & Study (if applicable). TV aerial point in Lounge, Bed 1 & Kitchen/Diner.
- ♦ Intruder Alarm system.
- ♦ Smoke detectors, Carbon Monoxide Alarm and security locks to all external doors. Door Bell. External light to front and to rear of property.
- ♦ Outside tap to rear of property.
- ♦ Fenced rear garden. Turfing to front and rear gardens.
- ♦ N.H.B.C 10 year warranty.
- ♦ Carpets from the Jelson selected range.

Please note: This information is only for guidance. Jelson Limited reserve the right to make alterations as necessary in respect of design, dimensions and finish of properties. All dimensions are approximate and for identification purposes only. You are advised to check with our Sales Staff regarding choices and fittings in particular house types. Where an option is indicated, this is subject to the building stage and whether materials have already been ordered. The company's policy is one of continuous improvement both in design and construction and we must therefore, reserve the right to make amendments without notice. The details contained in this leaflet do not form part of, or constitute warranty or part of any contract.

JD402

The Siskin

4 bed detached house



*Please note this property can be built in brick or render

Specification

The Siskin: 4 bed detached house

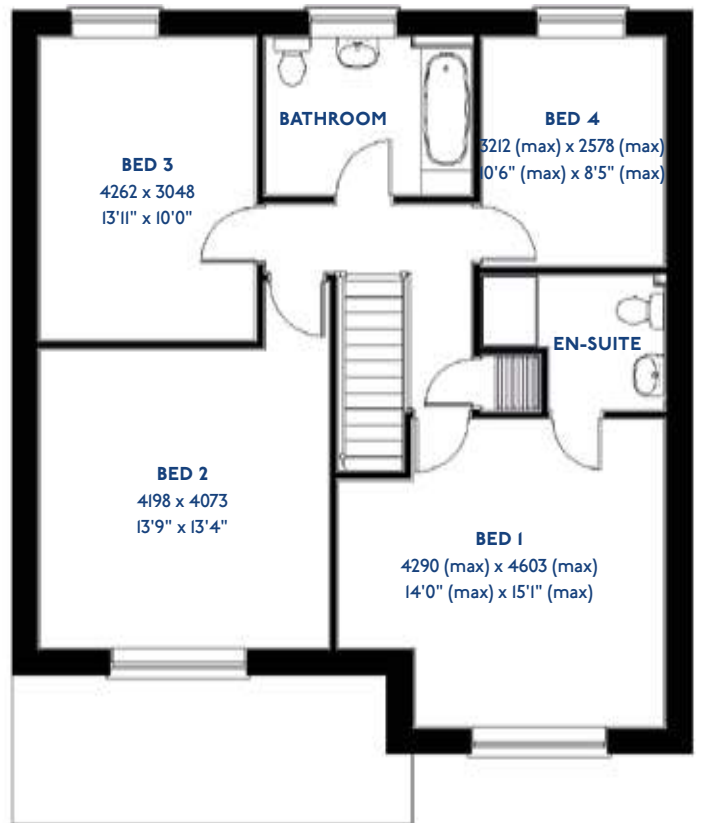
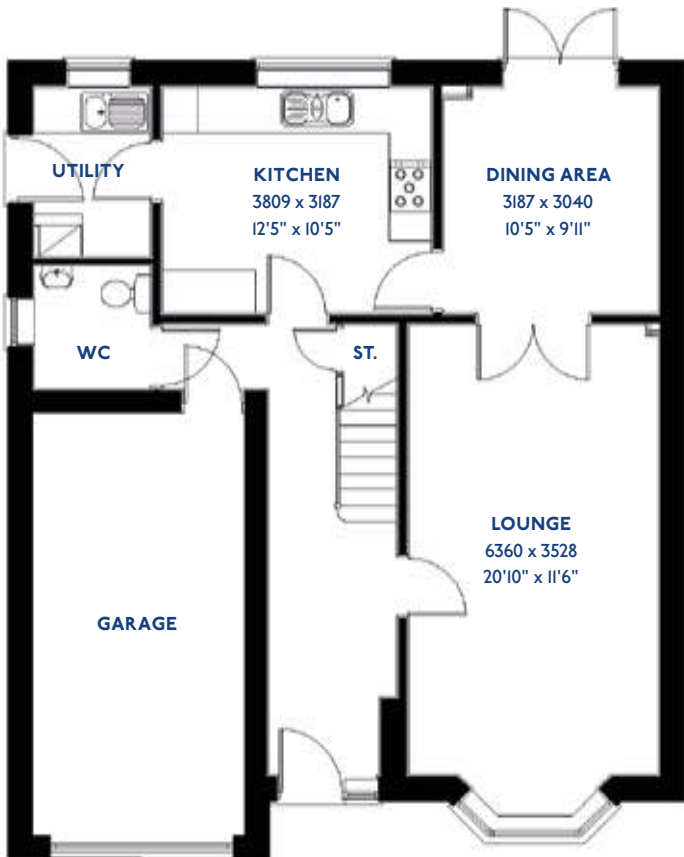
- ♦ Quality and value from a very old established family business with an enviable reputation.
- ♦ Traditional brick construction with a good standard of insulation.
- ♦ Solid internal walls to ground and 1st floor.
- ♦ PVCu windows, soffits and fascias.
- ♦ To include Oak Internal Doors.
- ♦ White Emulsion paint throughout.
- ♦ Fitted Kitchen with Single Oven in tall housing with Combination.
- ♦ Microwave Oven, 5 Burner Gas Hob, Flat Bottom Canopy Chimney and Stainless Steel Splashback. Under Pelmet lighting to wall units, Tall larder unit with wirework pull in baskets. A one & half bowl Under Mounted Stainless Steel sink, plumbing and electrics for washing machine, Integrated Fridge Freezer and Dishwasher. White downlight-ers to Kitchen & pendant fitting to Dining Area of Kitchen (if applicable).
- ♦ Quartz worktop to Kitchen only with quartz upstands.
- ♦ Ceramic flooring to Kitchen & Utility (if applicable).
- ♦ Full gas central heating with Smart Thermostat.
- ♦ White sanitary ware with co-ordinating wall tiles & white downlighters to Bathroom only. Thermostatic shower over bath in Main Bathroom together with a Silver shower screen. Thermostatic shower to En-Suite with co-ordinating wall tiles. Shaver Socket & Chrome Heated Towel Rail to the Bathroom & En-Suite.
- ♦ Cat 5 socket to Lounge next to TV aerial point and Bed 1 & Study (if applicable). TV aerial point in Lounge, Bed 1 & Kitchen/Diner. Two mains sockets in Kitchen & Bedroom 1.
- ♦ Intruder Alarm system.
- ♦ Smoke detectors, Carbon Monoxide Alarm and security locks to all external doors. Door Bell. External lights to front and rear of property.
- ♦ Outside tap to rear of property.
- ♦ Fenced rear garden. Turfing to front and rear gardens (where applicable).
- ♦ N.H.B.C 10 year warranty.
- ♦ Carpets from the Jelson selected range.

Please note: This information is only for guidance. Jelson Limited reserve the right to make alterations as necessary in respect of design, dimensions and finish of properties. All dimensions are approximate and for identification purposes only. You are advised to check with our Sales Staff regarding choices and fittings in particular house types. Where an option is indicated, this is subject to the building stage and whether materials have already been ordered. The company's policy is one of continuous improvement both in design and construction and we must therefore, reserve the right to make amendments without notice. The details contained in this leaflet do not form part of, or constitute warranty or part of any contract.

D4/I5

The Swaffham

4 bed detached house



Specification

The Swaffham: 4 bed detached house

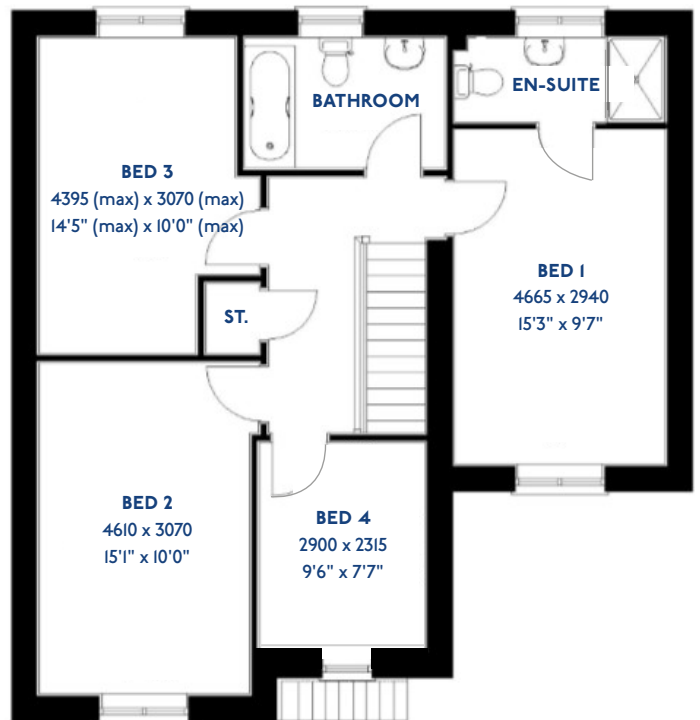
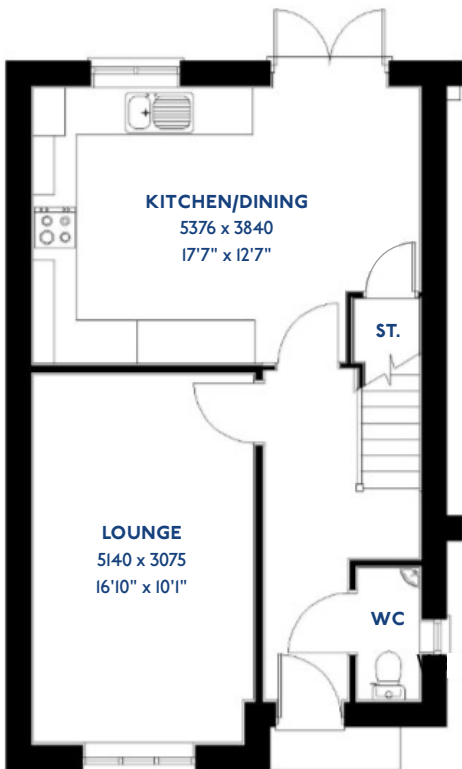
- Quality and value from a very old established family business with an enviable reputation.
- Traditional brick construction with a good standard of insulation.
- Solid internal walls to ground and 1st floor.
- PVCu windows, soffits and fascias.
- To include Oak Internal Doors.
- White Emulsion paint throughout.
- Fitted Kitchen with Single Oven in tall housing with Combination Microwave Oven, 5 Burner Gas Hob, Flat Bottom Canopy Chimney and Stainless Steel Splashback. Under Pelmet lighting to wall units, Tall larder unit with wirework pull in baskets. A one & half bowl Under Mounted Stainless Steel sink, plumbing and electrics for washing machine, Integrated Fridge Freezer and Dishwasher. White downlighters to Kitchen & pendant fitting to Dining Area of Kitchen (if applicable).
- Quartz worktop to Kitchen only with quartz upstands.
- Ceramic flooring to Kitchen & Utility (if applicable).
- Full gas central heating. (or alternative system if gas not available) with Smart Thermostat.
- White sanitary ware with co-ordinating wall tiles & white downlighters to Bathroom only. Thermostatic shower over bath in Main Bathroom together with a Silver shower screen. Thermostatic shower to En-Suite with co-ordinating wall tiles. Shaver Socket & Chrome Heated Towel Rail to the Bathroom & En-Suite.
- Cat 5 socket to Lounge next to TV aerial point and Bed 1 & Study (if applicable). TV aerial point in Lounge, Bed 1 & Kitchen/Diner.
- Intruder Alarm system.
- Smoke detectors, Carbon Monoxide Alarm and security locks to all external doors. Door Bell. External lights to front and rear of property.
- Outside tap to rear of property.
- Fenced rear garden. Turfing to front and rear gardens (where applicable).
- N.H.B.C 10 year warranty.
- Carpets from the Jelson selected range.

Please note: This information is only for guidance. Jelson Limited reserve the right to make alterations as necessary in respect of design, dimensions and finish of properties. All dimensions are approximate and for identification purposes only. You are advised to check with our Sales Staff regarding choices and fittings in particular house types. Where an option is indicated, this is subject to the building stage and whether materials have already been ordered. The company's policy is one of continuous improvement both in design and construction and we must therefore, reserve the right to make amendments without notice. The details contained in this leaflet do not form part of, or constitute warranty or part of any contract.

D4/22

The Swallow

4 bed detached house



Specification

The Swallow: 4 bed detached house

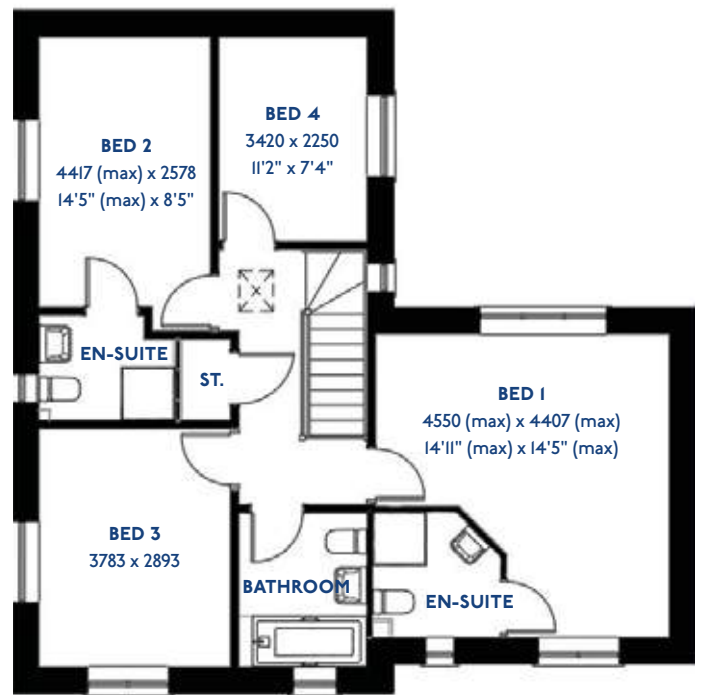
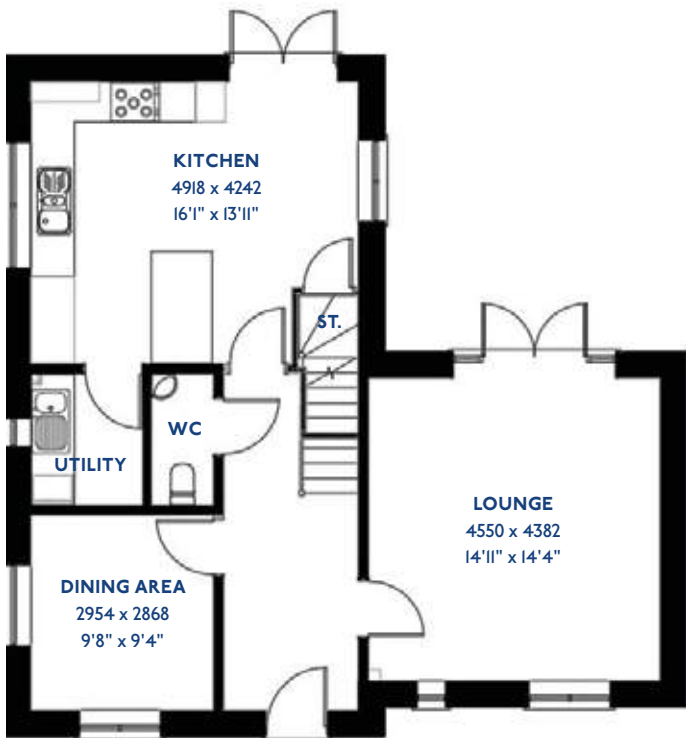
- Quality and value from a very old established family business with an enviable reputation.
- Traditional brick construction with a good standard of insulation.
- Solid internal walls to ground and 1st floor.
- PVCu windows, soffits and fascias.
- To include Oak Internal Doors.
- White Emulsion paint throughout.
- Fitted Kitchen with Single Oven in tall housing with Combination Microwave Oven, 5 Burner Gas Hob, Flat Bottom Canopy Chimney and Stainless Steel Splashback. Under Pelmet lighting to wall units, Tall larder unit with wirework pull in baskets. A one & half bowl Under Mounted Stainless Steel sink, plumbing and electrics for washing machine, Integrated Fridge Freezer and Dishwasher. White downlighters to Kitchen & pendant fitting to Dining Area of Kitchen (if applicable).
- Quartz worktop to Kitchen only with quartz upstands.
- Ceramic flooring to Kitchen & Utility (if applicable).
- Full gas central heating. (or alternative system if gas not available) with Smart Thermostat.
- White sanitary ware with co-ordinating wall tiles & white downlighters to Bathroom only. Thermostatic shower over bath in Main Bathroom together with a Silver shower screen. Thermostatic shower to En-Suite with co-ordinating wall tiles. Shaver Socket & Chrome Heated Towel Rail to the Bathroom & En-Suite.
- Cat 5 socket to Lounge next to TV aerial point and Bed 1 & Study (if applicable). TV aerial point in Lounge, Bed 1 & Kitchen/Diner.
- Intruder Alarm system.
- Smoke detectors, Carbon Monoxide Alarm and security locks to all external doors. Door Bell. External lights to front and rear of property.
- Outside tap to rear of property.
- Fenced rear garden. Turfing to front and rear gardens (where applicable).
- N.H.B.C 10 year warranty.
- Carpets from the Jelson selected range.

Please note: This information is only for guidance. Jelson Limited reserve the right to make alterations as necessary in respect of design, dimensions and finish of properties. All dimensions are approximate and for identification purposes only. You are advised to check with our Sales Staff regarding choices and fittings in particular house types. Where an option is indicated, this is subject to the building stage and whether materials have already been ordered. The company's policy is one of continuous improvement both in design and construction and we must therefore, reserve the right to make amendments without notice. The details contained in this leaflet do not form part of, or constitute warranty or part of any contract.

D4/21

The Wagtail

4 bed detached house



Specification

The Wagtail: 4 bed detached house

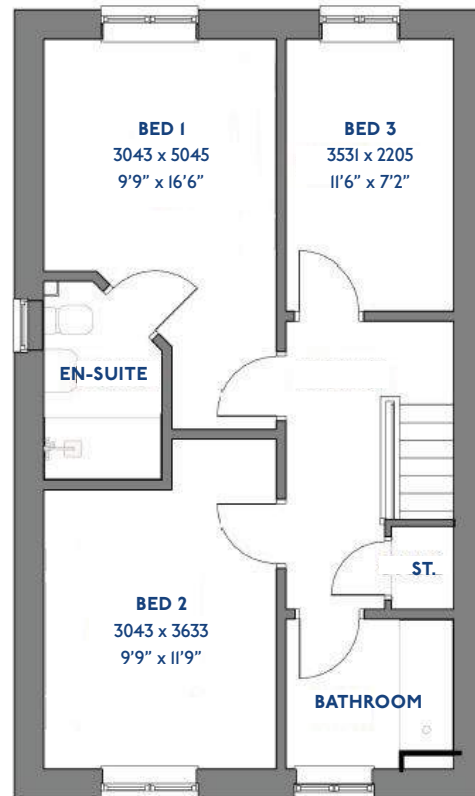
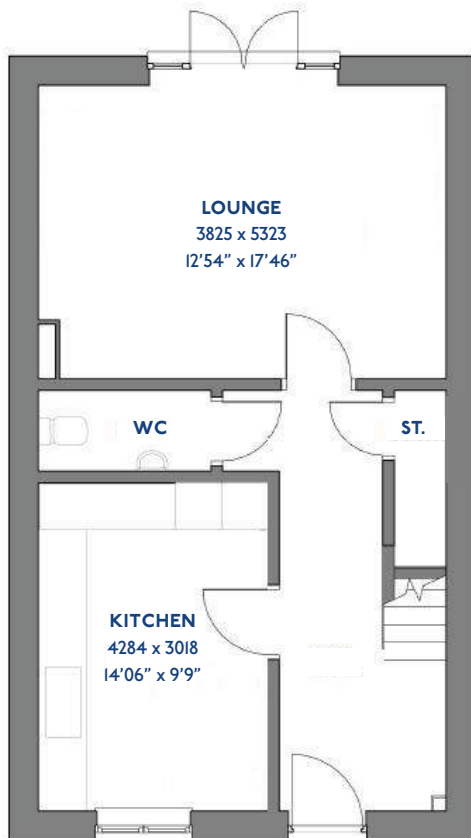
- ♦ Quality and value from a very old established family business with an enviable reputation.
- ♦ Traditional brick construction with a good standard of insulation.
- ♦ Solid internal walls to ground and 1st floor.
- ♦ PVCu windows, soffits and fascias.
- ♦ To include Oak Internal Doors.
- ♦ White Emulsion paint throughout.
- ♦ Fitted Kitchen with Single Oven in tall housing with Combination Microwave Oven, 5 Burner Gas Hob, Flat Bottom Canopy Chimney and Stainless Steel Splashback. Under Pelmet lighting to wall units, Tall larder unit with wirework pull in baskets. A one & half bowl Under Mounted Stainless Steel sink, plumbing and electrics for washing machine, Integrated Fridge Freezer and Dishwasher. White downlighters to Kitchen & pendant fitting to Dining Area of Kitchen (if applicable).
- ♦ Quartz worktop to Kitchen only with quartz upstands.
- ♦ Ceramic flooring to Kitchen & Utility (if applicable).
- ♦ Full gas central heating (or alternative system if gas not available) with Smart Thermostat.
- ♦ White sanitary ware with co-ordinating wall tiles & white downlighters to Bathroom only. Thermostatic shower over bath in Main Bathroom together with a Silver shower screen. Thermostatic shower to En-Suite with co-ordinating wall tiles. Shaver Socket & Chrome Heated Towel Rail to the Bathroom & En-Suite.
- ♦ Cat 5 socket to Lounge next to TV aerial point and Bed 1 & Study (if applicable). TV aerial point in Lounge, Bed 1 & Kitchen/Diner.
- ♦ Intruder Alarm system.
- ♦ Smoke detectors, Carbon Monoxide Alarm and security locks to all external doors. Door Bell. External lights to front and rear of property.
- ♦ Outside tap to rear of property.
- ♦ Fenced rear garden. Turfing to front and rear gardens (where applicable).
- ♦ N.H.B.C 10 year warranty.
- ♦ Carpets from the Jelson selected range.

Please note: This information is only for guidance. Jelson Limited reserve the right to make alterations as necessary in respect of design, dimensions and finish of properties. All dimensions are approximate and for identification purposes only. You are advised to check with our Sales Staff regarding choices and fittings in particular house types. Where an option is indicated, this is subject to the building stage and whether materials have already been ordered. The company's policy is one of continuous improvement both in design and construction and we must therefore, reserve the right to make amendments without notice. The details contained in this leaflet do not form part of, or constitute warranty or part of any contract.

JD319

The Willowby

3 bed detached house



Specification

The Willowby: 3 bed detached house

- ♦ Quality and value from a very old established family business with an enviable reputation.
- ♦ Traditional brick construction with a good standard of insulation.
- ♦ Solid internal walls to ground and 1st floor.
- ♦ PVCu windows, soffits and fascias.
- ♦ White Emulsion paint throughout.
- ♦ Fitted Kitchen with Double oven in tall housing, 4 Burner Gas Hob and Flat Bottom Canopy Chimney. Under Pelmet lighting to wall units. A one & half bowl Stainless Steel sink, plumbing and electrics for washing machine, Integrated Fridge Freezer and Dishwasher. White downlighters to Kitchen & pendant fitting to Dining Area of Kitchen (if applicable).
- ♦ Ceramic flooring to Kitchen.
- ♦ Full gas central heating with Thermostat.
- ♦ White sanitary ware with co-ordinating wall tiles & white downlighters to Bathrooms. Thermostatic shower over bath in Main Bathroom together with a Silver shower screen. Thermostatic shower to En-Suite with co-ordinating wall tiles. Shaver Socket & Chrome Heated Towel Rail to the Bathroom & En-Suite.
- ♦ Cat 5 socket to Lounge next to TV aerial point and Bed 1 & Study (if applicable). TV aerial point in Lounge, Bed 1 & Kitchen/Diner. Two mains sockets in Kitchen & Bedroom 1.
- ♦ Wiring only for future Intruder Alarm for keypad, control panel and bell box.
- ♦ Smoke detectors, Carbon Monoxide Alarm and security locks to all external doors. Door Bell. External light to front and rear of property.
- ♦ Outside tap to rear of property.
- ♦ Fenced rear garden. Turfing to front and rear gardens (where applicable).
- ♦ N.H.B.C 10 year warranty.
- ♦ Carpets from the Jelson selected range.

Please note: This information is only for guidance. Jelson Limited reserve the right to make alterations as necessary in respect of design, dimensions and finish of properties. All dimensions are approximate and for identification purposes only. You are advised to check with our Sales Staff regarding choices and fittings in particular house types. Where an option is indicated, this is subject to the building stage and whether materials have already been ordered. The company's policy is one of continuous improvement both in design and construction and we must therefore, reserve the right to make amendments without notice. The details contained in this leaflet do not form part of, or constitute warranty or part of any contract.

Development Plan

