



Standard Hill

📍 off Standard Hill, Hugglescote, Leicestershire, LE67 3GD

Standard Hill is an exciting new development of 2, 3 and 4 bedroom houses for sale in Hugglescote.

Located in a charming village on the River Sence, these modern new homes in Hugglescote will offer a perfect mix of peace and convenience, making them great for families and commuters looking for a quiet escape.

Hugglescote is known for its friendly community, making it easy to feel at home. Ideal for families, there's a good range of nearby amenities in the village, including a primary school, community centre and a choice of local parks.

Plus, with larger towns like Coalville and Ashby close by, you'll have everything you need, including shopping centres, schools, a leisure centre and healthcare services.

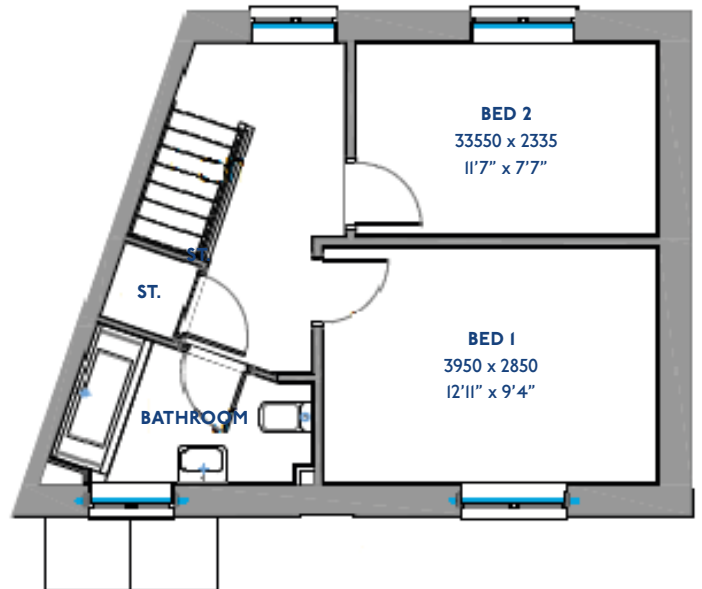
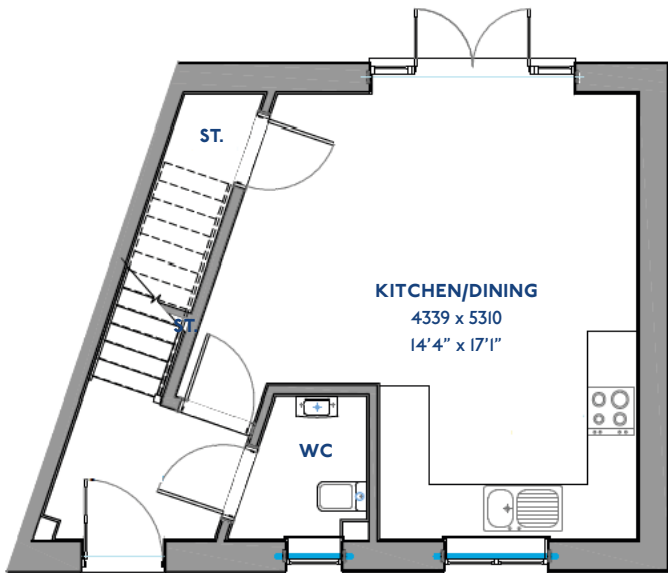
The village is also perfectly positioned for commuters, offering easy access to Leicester, Derby, Nottingham and Birmingham.

FOR OVER **130** YEARS

JS210L

The Acer

2 bed semi-detached house



*Please note this property can be built in brick or render.

Specification

The Acer: 2 bed semi-detached house

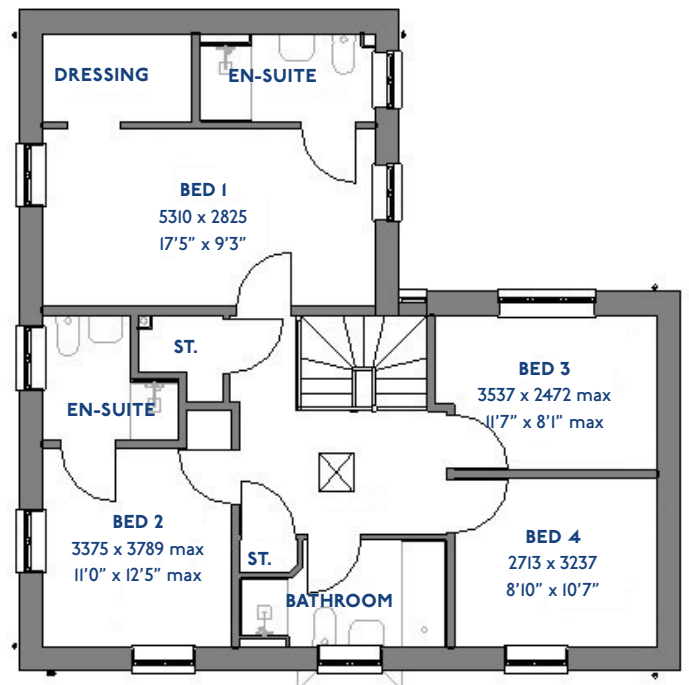
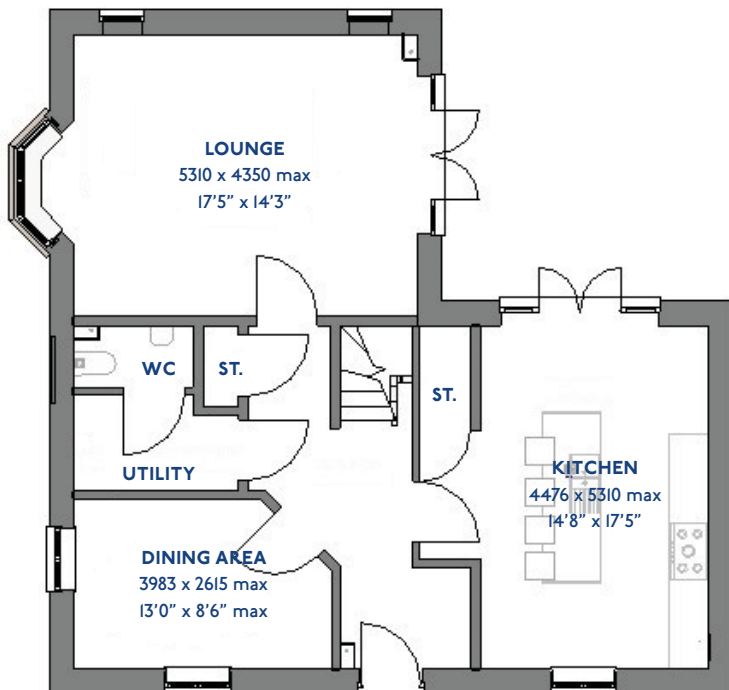
- ♦ Quality and value from a very old established family business with an enviable reputation.
- ♦ Traditional brick construction with a good standard of insulation.
- ♦ Solid internal walls to ground and 1st floor.
- ♦ PVCu windows, soffits and fascias.
- ♦ White Emulsion paint throughout.
- ♦ Fitted Kitchen with Single Oven 4 Burner Induction Hob and Flat
- ♦ Bottom Canopy Chimney. A single bowl Stainless Steel sink, plumbing and electrics for washing machine, Integrated Fridge Freezer and Dishwasher. White downlighters to Kitchen & pendant fitting to Dining Area of Kitchen (if applicable).
- ♦ Ceramic flooring to Kitchen & Utility (if applicable).
- ♦ Baxi Assure Air Source Heat Pump for hot water and heating with Solar Panels.
- ♦ VEVA Domestic EV Charger (Untethered)
- ♦ White sanitary ware with co-ordinating wall tiles & white downlighters to Bathroom only. Thermostatic shower over bath in Main Bathroom together with a Silver shower screen. Shaver Socket & Chrome Heated Towel Rail to the Bathroom
- ♦ Cat 5 socket to Lounge next to TV aerial point and Bed 1 & Study (if applicable). TV aerial point in Lounge, Bed 1.
- ♦ Wiring only for future Intruder Alarm for keypad, control panel and bell box.
- ♦ Smoke detectors, Carbon Monoxide Alarm and security locks to all external doors. External light to front and rear of property.
- ♦ Outside tap to rear of property.
- ♦ Fenced rear garden. Turfing to front and rear gardens (where applicable).
- ♦ N.H.B.C 10 year warranty.
- ♦ Carpets from the Jelson selected range.

Please note: This information is only for guidance. Jelson Limited reserve the right to make alterations as necessary in respect of design, dimensions and finish of properties. All dimensions are approximate and for identification purposes only. You are advised to check with our Sales Staff regarding choices and fittings in particular house types. Where an option is indicated, this is subject to the building stage and whether materials have already been ordered. The company's policy is one of continuous improvement both in design and construction and we must therefore, reserve the right to make amendments without notice. The details contained in this leaflet do not form part of, or constitute warranty or part of any contract.

JD421L

The Kingfisher

4 bed detached house



*Please note this property can be built in brick or render.

Specification

The Kingfisher: 4 bed detached house

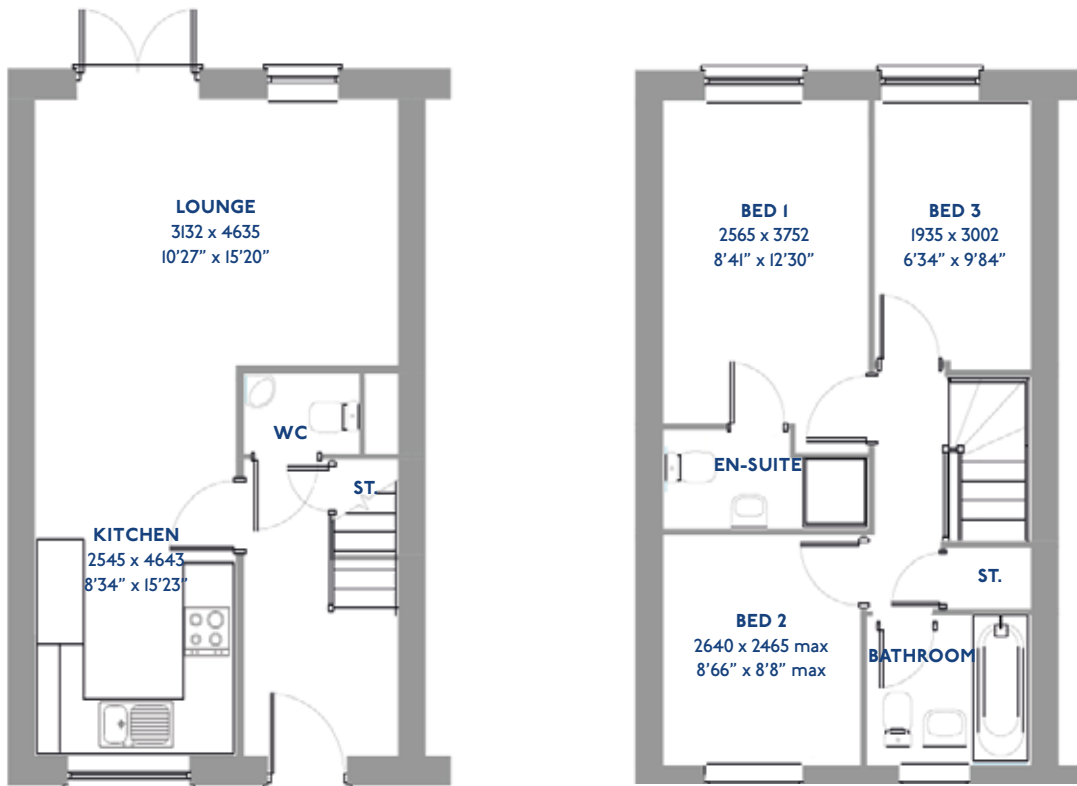
- ♦ Quality and value from a very old established family business with an enviable reputation.
- ♦ Traditional brick construction with a good standard of insulation.
- ♦ Solid internal walls to ground and 1st floor.
- ♦ PVCu windows, soffits and fascias.
- ♦ To include Oak Internal Doors.
- ♦ White Emulsion paint throughout.
- ♦ Fitted Kitchen with Single Oven in tall housing with Combination Microwave Oven, Induction Hob, Flat Bottom Canopy Chimney and Stainless Steel Splashback. Under Pelmet lighting to wall units, small larder unit with wirework pull in baskets. A one & half bowl Under Mounted Stainless Steel sink, plumbing and electrics for washing machine, Integrated Fridge Freezer and Dishwasher. White downlighters to Kitchen & pendant fitting to Dining Area of Kitchen (if applicable).
- ♦ Quartz worktop to Kitchen only with quartz upstands.
- ♦ Baxi Assure Air Source Heat Pump for hot water and heating with Solar Panels.
- ♦ VEVA Domestic EV Charger (Untethered)
- ♦ Ceramic flooring to Kitchen & Utility (if applicable).
- ♦ White sanitary ware with co-ordinating wall tiles & white downlighters to Bathroom only. Thermostatic shower over bath in Main Bathroom together with a Silver shower screen. Shaver Socket & Chrome Heated Towel Rail to the Bathroom
- ♦ Cat 5 socket to Lounge next to TV aerial point and Bed 1 & Study (if applicable). TV aerial point in Lounge, Bed 1 & Kitchen/Diner.
- ♦ Intruder Alarm system
- ♦ Smoke detectors, Carbon Monoxide Alarm and security locks to all external doors. Door Bell. External light to front and rear of property.
- ♦ Outside tap to rear of property.
- ♦ Fenced rear garden. Turfing to front and rear gardens (where applicable).
- ♦ N.H.B.C 10 year warranty.
- ♦ Carpets from the Jelson selected range.

Please note: This information is only for guidance. Jelson Limited reserve the right to make alterations as necessary in respect of design, dimensions and finish of properties. All dimensions are approximate and for identification purposes only. You are advised to check with our Sales Staff regarding choices and fittings in particular house types. Where an option is indicated, this is subject to the building stage and whether materials have already been ordered. The company's policy is one of continuous improvement both in design and construction and we must therefore, reserve the right to make amendments without notice. The details contained in this leaflet do not form part of, or constitute warranty or part of any contract.

JS304L

The Plover

3 bed semi-detached houses



*Please note this property can be built in brick or render.

Specification

The Plover: 3 bed semi-detached houses

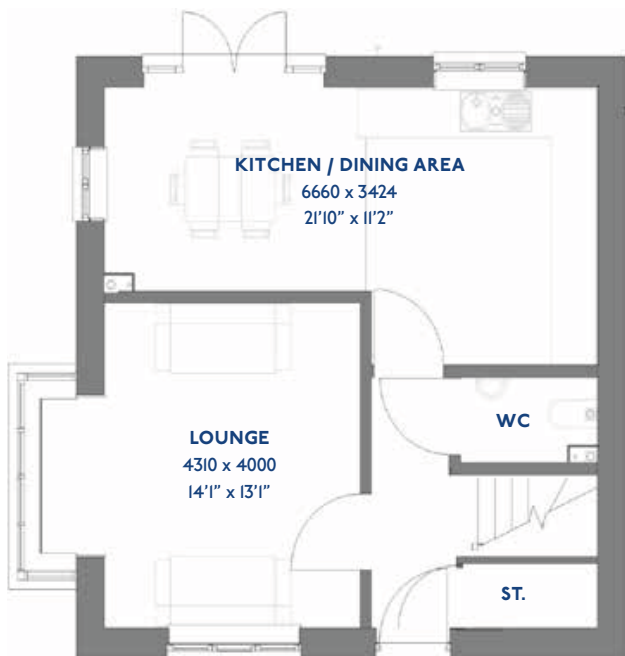
- ♦ Quality and value from a very old established family business with an enviable reputation.
- ♦ Traditional brick construction with a good standard of insulation.
- ♦ Solid internal walls to ground and 1st floor.
- ♦ PVCu windows, soffits and fascias.
- ♦ White Emulsion paint throughout.
- ♦ Fitted Kitchen with Single Oven 4 Burner Induction Hob and Flat Bottom Canopy Chimney. A single bowl Stainless Steel sink, plumbing and electrics for washing machine, Integrated Fridge Freezer and Dishwasher. White downlighters to Kitchen & pendant fitting to Dining Area of Kitchen (if applicable).
- ♦ Ceramic flooring to Kitchen & Utility (if applicable).
- ♦ Baxi Assure Air Source Heat Pump for hot water and heating with Solar Panels.
- ♦ VEVA Domestic EV Charger (Untethered)
- ♦ White sanitary ware with co-ordinating wall tiles & white downlighters to Bathroom only. Thermostatic shower over bath in Main Bathroom together with a Silver shower screen. Shaver Socket & Chrome Heated Towel Rail to the Bathroom.
- ♦ Cat 5 socket to Lounge next to TV aerial point and Bed 1 & Study (if applicable). TV aerial point in Lounge, Bed 1.
- ♦ Wiring only for future Intruder Alarm for keypad, control panel and bell box.
- ♦ Smoke detectors, Carbon Monoxide Alarm and security locks to all external doors. External light to front and rear of property.
- ♦ Outside tap to rear of property.
- ♦ Fenced rear garden. Turfing to front and rear gardens (where applicable).
- ♦ N.H.B.C 10 year warranty.
- ♦ Carpets from the Jelson selected range.

Please note: This information is only for guidance. Jelson Limited reserve the right to make alterations as necessary in respect of design, dimensions and finish of properties. All dimensions are approximate and for identification purposes only. You are advised to check with our Sales Staff regarding choices and fittings in particular house types. Where an option is indicated, this is subject to the building stage and whether materials have already been ordered. The company's policy is one of continuous improvement both in design and construction and we must therefore, reserve the right to make amendments without notice. The details contained in this leaflet do not form part of, or constitute warranty or part of any contract.

JD331L

The Redpoll

3 bed detached house



*Please note this property can be built in brick or render.

Specification

The Redpoll: 3 bed detached house

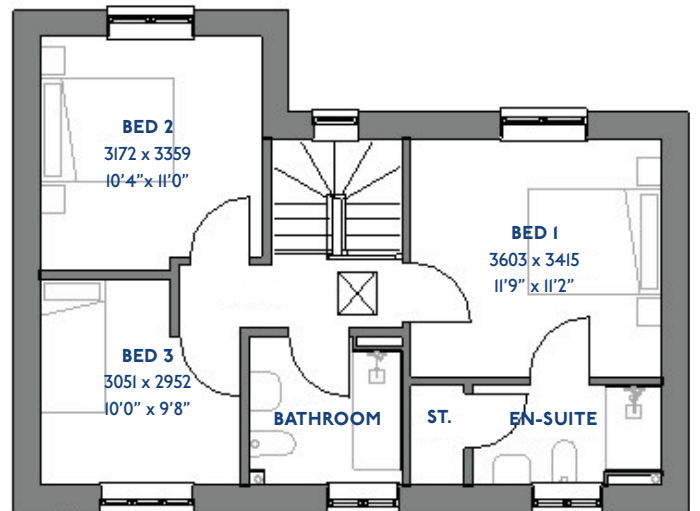
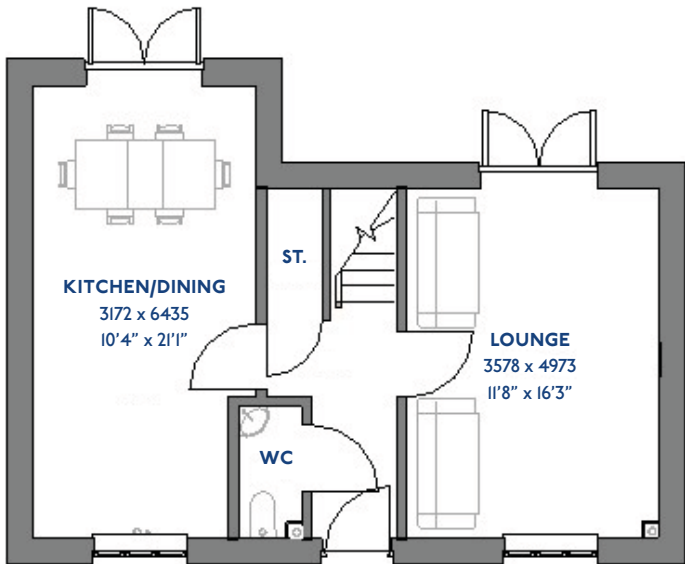
- ♦ Quality and value from a very old established family business with an enviable reputation.
- ♦ Traditional brick construction with a good standard of insulation.
- ♦ Solid internal walls to ground and 1st floor.
- ♦ PVCu windows, soffits and fascias.
- ♦ White Emulsion paint throughout.
- ♦ Fitted Kitchen with Double oven in tall housing, Induction Hob and Flat Bottom Canopy Chimney. Under Pelmet lighting to wall units. A one & half bowl Stainless Steel sink, plumbing and electrics for washing machine, Integrated Fridge Freezer and Dishwasher. White downlighters to Kitchen & pendant fitting to Dining Area of Kitchen (if applicable).
- ♦ Ceramic flooring to Kitchen.
- ♦ Baxi Assure Air Source Heat Pump for hot water and heating with Solar Panels.
- ♦ VEVA Domestic EV Charger (Untethered)
- ♦ White sanitary ware with co-ordinating wall tiles & white downlighters to Bathroom only. Thermostatic shower over bath in Main Bathroom together with a Silver shower screen. Thermostatic shower to En-Suite with co-ordinating wall tiles. Shaver Socket & Chrome Heated Towel Rail to the Bathroom & En-Suite.
- ♦ Cat 5 socket to Lounge next to TV aerial point and Bed 1 & Study (if applicable). TV aerial point in Lounge, Bed 1 & Kitchen/Diner.
- ♦ Intruder Alarm system.
- ♦ Smoke detectors, Carbon Monoxide Alarm and security locks to all external doors. Door Bell. External light to front and rear of property.
- ♦ Outside tap to rear of property.
- ♦ Fenced rear garden. Turfing to front and rear gardens.
- ♦ N.H.B.C 10 year warranty.
- ♦ Carpets from the Jelson selected range.

Please note: This information is only for guidance. Jelson Limited reserve the right to make alterations as necessary in respect of design, dimensions and finish of properties. All dimensions are approximate and for identification purposes only. You are advised to check with our Sales Staff regarding choices and fittings in particular house types. Where an option is indicated, this is subject to the building stage and whether materials have already been ordered. The company's policy is one of continuous improvement both in design and construction and we must therefore, reserve the right to make amendments without notice. The details contained in this leaflet do not form part of, or constitute warranty or part of any contract.

JD315L

The Whinchat

3 bed detached house



*Please note this property can be built in brick or render.

Specification

The Whinchat: 3 bed detached house

- ♦ Quality and value from a very old established family business with an enviable reputation.
- ♦ Traditional brick construction with a good standard of insulation.
- ♦ Solid internal walls to ground and 1st floor.
- ♦ PVCu windows, soffits and fascias.
- ♦ White Emulsion paint throughout.
- ♦ Fitted Kitchen with Double oven in tall housing, Induction Hob and Flat Bottom Canopy Chimney. Under Pelmet lighting to wall units. A one & half bowl Stainless Steel sink, plumbing and electrics for washing machine, Integrated Fridge Freezer and Dishwasher. White downlighters to Kitchen & pendant fitting to Dining Area of Kitchen (if applicable).
- ♦ Ceramic flooring to Kitchen.
- ♦ Baxi Assure Air Source Heat Pump for hot water and heating with Solar Panels.
- ♦ VEVA Domestic EV Charger (Untethered)
- ♦ White sanitary ware with co-ordinating wall tiles & white downlight-ers to Bathroom only. Thermostatic shower over bath in Main Bath-room together with a Silver shower screen. Thermostatic shower to En-Suite with co-ordinating wall tiles. Shaver Socket & Chrome Heated Towel Rail to the Bathroom & En-Suite.
- ♦ Cat 5 socket to Lounge next to TV aerial point and Bed 1 & Study (if applicable). TV aerial point in Lounge, Bed 1 & Kitchen/Diner.
- ♦ Intruder Alarm system.
- ♦ Smoke detectors, Carbon Monoxide Alarm and security locks to all external doors. Door Bell. External light to front and rear of property.
- ♦ Outside tap to rear of property.
- ♦ Fenced rear garden. Turfing to front and rear gardens.
- ♦ N.H.B.C 10 year warranty.
- ♦ Carpets from the Jelson selected range.

Please note: This information is only for guidance. Jelson Limited reserve the right to make alterations as necessary in respect of design, dimensions and finish of properties. All dimensions are approximate and for identification purposes only. You are advised to check with our Sales Staff regarding choices and fittings in particular house types. Where an option is indicated, this is subject to the building stage and whether materials have already been ordered. The company's policy is one of continuous improvement both in design and construction and we must therefore, reserve the right to make amendments without notice. The details contained in this leaflet do not form part of, or constitute warranty or part of any contract.

Development Plan

